

**ABUNDANCE
M.E.N.A
COMMERCIAL BROKERS CO.L.L.C**



***CATALOGUE OF PUBLIC
WORKS EQUIPMENT***

COMPANY PRESENTATION

ABUNDANCE MENA COMMERCIAL BROKERS CO L.L.C is a group of independent traders specializing in connecting sellers and buyers (suppliers and clients). Our expertise extends as intermediaries in commodities (energy, mining, agriculture) as well as in the fields of services, automotive equipment, heavy machinery, and agricultural machinery worldwide. At its core, the role of an intermediary is advisory. However, thanks to our deep knowledge of international trade and financial markets (Forex, commodities, stocks, bonds, stock indices, and crypto currencies), and our team of market experts who constantly monitor trends and market developments, we are able to provide the technical support needed for all types of international transactions to our various business partners. Moreover, we facilitate commercial connections between these partners, whether they are suppliers or clients.

We possess the necessary expertise to advise and guide our business partners, streamline procedures and payment methods in international import-export transactions, all in a secure and profitable manner for all parties involved. This approach sets Abundance MENA apart as an exceptional trader.

ABUNDANCE MENA offers its expertise to help you find the ideal client or supplier for your company, anywhere in the world. Our commitment is particularly strong in the African continent, where we strive to connect our best African suppliers and clients with their counterparts from around the world, regardless of their industry.

Thanks to our teams of professionals in the field and our international network, we have developed innovative strategies to reassure and secure both the client and the buyer throughout the commercial operations process. Furthermore, we offer risk hedging mechanisms to protect against price fluctuations in the physical products market.

ABUNDANCE MENA is, above all, a tailor-made solution for all your requests, no matter how specific they may be, wherever you are in the world. Our passion, commitment, and knowledge of international trade and financial markets make us trustworthy traders.

Our motto: Finding solutions to import-export challenges in Africa and around the world!

PRESENTATION OF OUR CONSTRUCTION EQUIPMENT FOR PROFESSIONALS AND PRIVATE INDIVIDUALS.

Based in the heart of World Finance in the United Arab Emirates, and with a wealth of experience in supporting and putting major equipment and heavy machinery dealers in touch with each other, our range of construction and public works machinery continues to grow, so that we can offer you the latest, high-quality equipment to meet your requirements. To achieve this, our partners (dealers and dealers) constantly monitor our machines and equipment and train our technicians and operators at the customer's request.

Our team is structured to provide you with ongoing technical and commercial support, to advise you on the choice of equipment that meets your needs.

In addition, we offer the sale of second-hand or new equipment for all the brands we work with. We can also carry out periodic maintenance work, subject to a preliminary study on our part.

Throughout the site, you will find technical documentation on the equipment we offer. Please do not hesitate to contact us for any other request.

THANK YOU to the customers who have already placed their trust in us and WELCOME to those who would like to join us!



ERGONOMICALLY DESIGNED FOR COMFORT AND INCREASED PRODUCTIVITY

POWERPLUS Dump Truck cabins are shock and noise resistant to reduce operator fatigue. They also come equipped with an adjustable suspension seat, MP3 player and air-conditioning for prolonged working comfort.

What's more, a streamlined dashboard and wide operational view provides both ease of use and improved safety when in operation.



ENGINEERED FOR OPTIMAL DURABILITY



• **ENGINE**

Optimized performance, proven reliability, fuel efficiency.



• **TRANSMISSION**

Manual transmission, high reliability & efficiency, excellent acceleration performance.



• **LIFTING DEVICE**

HYVA hydraulic lifting system, powerful lifting performance.



• **MAIN FRAME**

Strengthened chassis frame built to increase durability.



• **AXLE ASSEMBLY**

Robust single casting axle housing, double reduction. High torque efficiency & reliability.



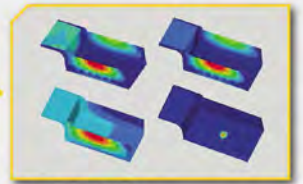
• SAFETY
Roll Over Protection System (ROPS) and Falling Object Protection System (FOPS).



• THROUGH BEAM STRUCTURE
Anti-collision beam, bumper and through beam structure designed with safety as the first priority.



• HYDRAULIC RETARDER (OPTIONAL)
Transmission combined with hydraulic retarder can reduce the speed of the truck when going down a long slope, reduces the wear of braking components and extend tire life.



• CARGO BODY
High tensile strength abrasion resistant steel.



• SUSPENSION
Leaf spring balance rear suspensions help to adapt to off-road conditions. Upper and lower double-V type guide structure enables the truck to carry more load with higher reliability.



• STEERING SYSTEM
Double steering system reduces steering oil temperature, resulting in lighter steering operation.



• INTAKE SYSTEM
Three-stage air filter improves filtration efficiency.



• TIRE
Special mining tires with longitudinal and transverse groove design provides excellent comfort, grip and performance.

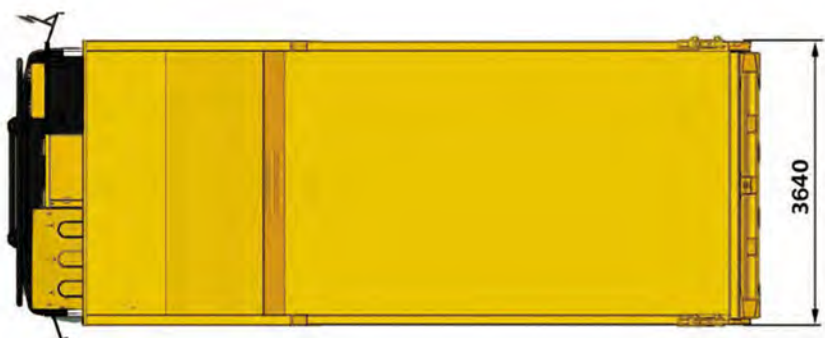
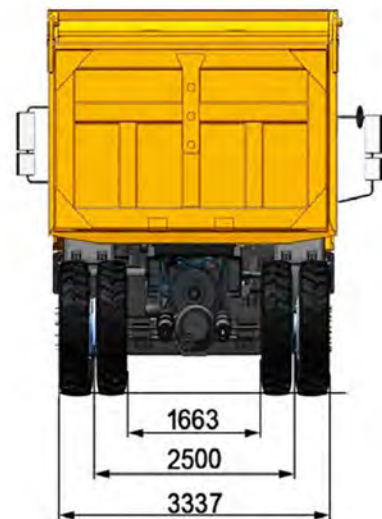
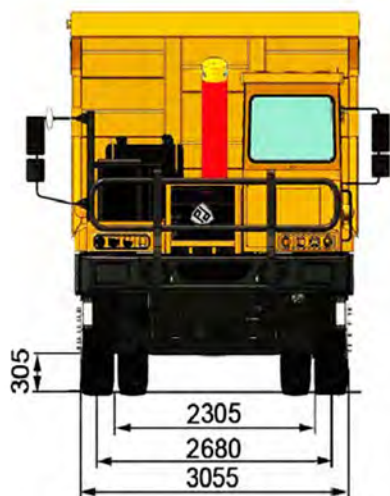
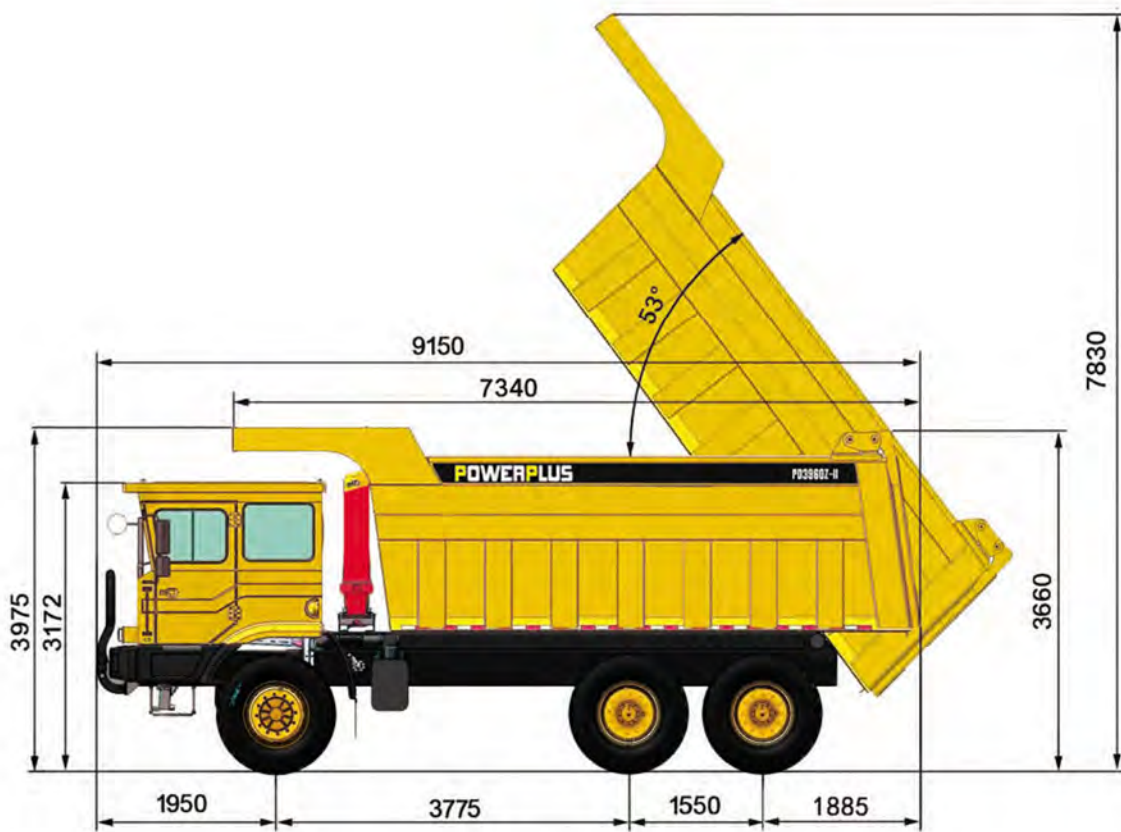
*Illustration and statements made are based on standard operations which include optional specifications and attachments.

PD3960Z-II

MAIN SPECIFICATIONS		
Kerb Mass	kg	30000
Maximum Laden Mass	kg	60000
GVM	kg	90000
Axle Drive		6x4
Overall Length	mm	9150
Overall Width	mm	3640
Overall Height	mm	3975
Maximum Height Of Lifting Cargo Body	mm	7830
Maximum Angle Of Lifting Cargo Body	°	53
Gradeability	%	32
Maximum Speed	km/h	42
Fuel Tank Capacity	L	500
ENGINE		
Model		STEYR WP12G460E310
Rated Power	hp	460
Rated Speed	rpm	2100
Emission Standard		Euro III
CLUTCH		
Type		EATON Ø 430
TRANSMISSION		
Model		FAST 7DS220
Gears		7 Forward, 1 Reverse
Type		Manual
HYDRAULIC SYSTEM		
Hydraulic Lifting System		HYVA
Model		Alpha179
Steering Gear		Full hydraulic steering
Lifting Time For Cargo Body	sec	≤33
Falling Time For Cargo Body	sec	≤30

WEIGHT DISTRIBUTION		
Empty Payload		
Front Axle	kg	14000
Rear Axle	kg	16000
Total Weight (50% Fuel)	kg	30000
Heavy Payload		
Front Axle	kg	20000
Rear Axle	kg	35000+35000
Total Weight	kg	90000
Axle Type		Double reduction
STEERING SYSTEM		
Type		Double steering system
BRAKE SYSTEM		
Service Brake		Pneumatic pressure, drum brake
Parking Brake		Double circuit spring energy storage braking
Braking Distance		<15m (V=30km/h)
DUMP BODY		
Bottom Plate Material / Thickness	mm	18 (NM400)
Rear Plate Material / Thickness	mm	10 (T700)
Front Plate Material / Thickness	mm	10 (T700)
Side Plate Material / Thickness	mm	10 (NM400)
Loading Volume	m³	30
TIRE		
Tire Size		14.00-25-36PR
Rims Size		10.00-25
CABIN		
Type		POWERPLUS continental interior styling with air conditioning, MP3/Radio.







POWERPLUS
POWERPLUS GROUP INC., USA



OVER

45
YEARS OF TRUST



PD880Z-II

DUMP TRUCK

TECHNICAL SPECIFICATIONS

		Unit	PD880Z-II
Main Specifications	Maximum laden mass	kg	39500
	Kerb mass	kg	15500
	GVM	kg	55000
	Overall length	mm	10600
	Overall width	mm	2495
	Overall height	mm	3450
	Maximum gradeability	°	32
	Approach / Departure angle	°	28 / 30
	Wheelbase	mm	1800 + 5400 + 1400
Dump Body	Length	mm	7800
	Width	mm	2300
	Height	mm	1800
	Floor thickness	mm	8
	Side thickness	mm	6
Engine	Model		WP10.380E22
	Type		4 stroke diesel, turbo-charged
	Rated Power	HP	380
	Rated Speed	rpm	2200
	Displacement	L	9.726
	Emission		Euro II
Transmission	Model		FAST 10JSD180
	Gears		Forward 10 & Reverse 2
Axle	Front		9.5T (MAN Technology)
	Rear		16T x 2 (MAN Technology) Double hub reduction
Steering Unit	Type		ZF Technology, LHD / RHD
Clutch	Type		φ430 Single-plate, air assisted
Fuel	Fuel tank capacity	L	380
Tires	No. of tire		12 + 1
	Tire size		12.00R20
	Axle drive		8 x 4
Cabin	Type		MAN-POWERPLUS continental interior styling with air conditioning. MP3/Radio, double doors and sleeper.

POWERPLUS DUMP TRUCK TECHNICAL SPECIFICATIONS



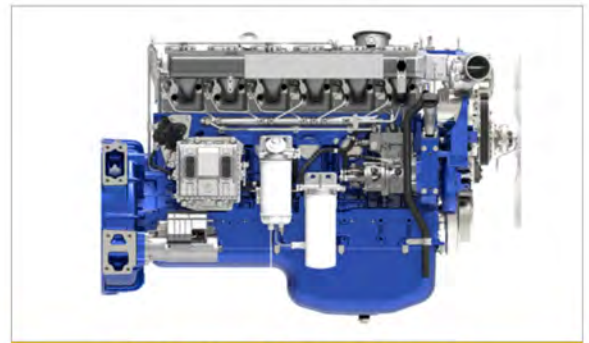
HID LIGHTS



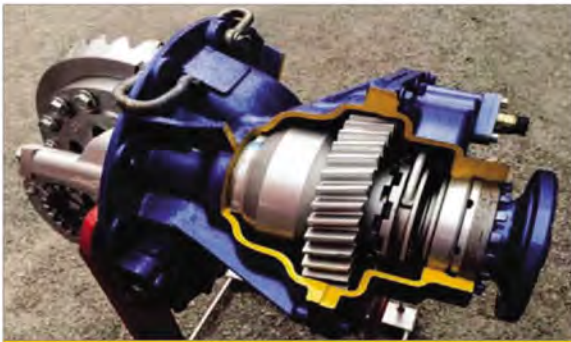
TIPPABLE CABIN



DASHBOARD WITH REAR VIEW CAMERA



STEYR WP10.380E22 ENGINE



MAN TECHNOLOGY AXLE



FAST 10JSD180 TRANSMISSION



SUN SHADES



RADIAL TIRES

CRAWLER CRANE TECHNICAL SPECIFICATIONS

MODEL		PCC500S-II	PCC800S-II	PCC1000S-II	PCC1200S-II	
Maximum Rated Lifting Capacity	T	50	80	100	120	
Main Boom Length	m	13-52	13-58	16-73	16-73	
Length of Jib	m	9.15-15.25	9-18	13-25	13-25	
Length of Main Boom + Jib	m	43+15	49+18	61+25	61+25 (Fly Jib) 49+46 (Luffing)	
Boom Angle	°	30~80	30~80	30~80	30~80	
Gradeability	%	40	30	30	30	
Track Shoes	mm	760	860	1015	1015	
Machine Weight	T	50	82	103	110	
Ground Pressure	MPa	0.069	0.082	0.07	0.08	
Counter Weight	T	17.5	24.6	34	40	
ENGINE						
Model		CUMMINS QSB6.7 <small>(Made in USA)</small>	CUMMINS QSL9 <small>(Made in USA)</small>	CUMMINS QSL9 <small>(Made in USA)</small>	CUMMINS QSL9 <small>(Made in USA)</small>	
Rated Power	HP	173	285	285	285	
Rated Speed	rpm	2000	2000	2000	2000	
Emission	Euro III					
HYDRAULIC SYSTEM						
Main Pump		Rexroth (Germany)	Rexroth (Germany)	Rexroth (Germany)	Rexroth (Germany)	
Servo Pump		Rexroth (Germany)	Rexroth (Germany)	Rexroth (Germany)	Rexroth (Germany)	
MAIN, AUX & BOOM HOIST WINCH						
Main Winch		Rexroth (Germany)	Kawasaki (Japan)	Rexroth (Germany)	Kawasaki (Japan)	
Auxiliary Winch		Rexroth (Germany)	Kawasaki (Japan)	Rexroth (Germany)	Rexroth (Germany)	
Single Line Pull	T	5.6	8	8.3	10	
Wire Rope Diameter / Length	m	Main Ø 20mm / 170m	Main Ø 26mm / 220m	Main Ø 26mm / 285m	Main Ø 26mm / 285m	
		Aux Ø 20mm / 120m	Aux. Ø 26mm / 180m	Aux. Ø 26mm / 210m	Aux. Ø 26mm / 210m	
WORKING SPEED						
Swing Valve		Rexroth (Germany)	Rexroth (Germany)	Rexroth (Germany)	Rexroth (Germany)	
Derricking Motor		Rexroth (Germany)	Rexroth (Germany)	Rexroth (Germany)	Rexroth (Germany)	
Rope Speed	Hoist	m/min	80 / 40	74 / 37	114 / 57	116 / 57
	Lower		90 / 45	74 / 37	114 / 57	116 / 57
	Boom Hoist		52	58	54	54
	Boom Lower		52	58	54	54
Swing Speed	r/min	3.2	2	0~1.96	0~1.96	
TRAVEL						
Travel Motor		Rexroth (Germany)	Rexroth (Germany)	Nabtesco (Japan)	Nabtesco (Japan)	
Travel Speed	km/h	1.3	1.1~2.2	0.9~1.3	0.9~1.3	

* Load chart available upon request



POWERPLUS
POWERPLUS GROUP INC., USA



POWERPLUS
POWERPLUS GROUP INC., USA



HYDRAULIC TRUCK CRANE



HYDRAULIC TRUCK CRANE

TECHNICAL SPECIFICATIONS

MODEL		PHC200S-V	PHC300S-V	PHC400S-V	PHC600S-V
Maximum Rated Lifting Capacity	kg	20000	30000	40000	60000
Overall Length	m	12.655	12.76	13.3	13.58
Overall Width	m	2.5	2.50	2.50	2.80
Overall Height	m	3.465	3.48	3.5	3.62
Boom Length	m	10.35-33	10.65-39.5	10.85-40.45	11.2-42
Boom Angle	°	-2 ~ 81	-2 ~ 80	-2 ~ 81	-2 ~ 80
Jib Length	m	8.5	8.5	8.5,14.5	9,15
Slewing Speed	rpm	0-2.2	0-2.5	0-2	0-2
Self Weight in Travelling Condition	kg	27450	32430	36218	42400
Front Axle Load	kg	6970	6980	6990/6991	8000/8450
Rear Axle Load	kg	20480	25450	22137	26000
Boom + Jib		4 + 1	5 + 1	5 + 2	5 + 2
ENGINE					
Model		STEYR WP6.240N / CUMMINS ISDe 245 30	STEYR WP10.290 / CUMMINS ISLe 290 30	STEYR WP10.336 / CUMMINS ISLe 310 30	STEYR WP12.330 / CUMMINS ISLe 340 30
Rated Power	HP	240 / 245	290	336 / 310	330 / 340
Rated Speed	rpm	2500	2200 / 2100	2200 / 2100	2100
Emission		Euro III			
TRAVEL					
Maximum Travelling Speed	km/h	70	70	70	72
Minimum Turning Radius	m	10	11	11	11
Minimum Clearance	mm	260	260	250	250
Approach Angle	°	16	16	17	16.5
Departure Angle	°	11	10.5	10	10.3
Maximum Gradeability	%	24	29	22.5	30
LIFTING PERFORMANCE					
Outrigger Span (Longitudinal)	m	4.90	5.41	5.40	5.80
Outrigger Span (Transverse)	m	6.00	6.50	6.50	7.20
Maximum Lifting Moment (min. boom length)	kN.m	875	1050	1200	1800
Maximum Lifting Moment (max. boom length)	kN.m	470	502	485	864
Maximum Lifting Height (Boom)	m	33.2	40	40.57	41.85
Maximum Lifting Height (Jib)	m	42.2	49	54.5	57.5
WORKING SPEED					
Maximum Speed (Single Wire)	m/min	130	138	70	130
Boom Extending Time	sec	48	77	90	95
Boom Elevating Time	sec	34	49	60	70

* Load chart available upon request





POWERPLUS
POWERPLUS GROUP INC., USA



ALL TERRAIN TRUCK CRANE



ALL TERRAIN TRUCK CRANE

TECHNICAL SPECIFICATIONS

MODEL		PATC1650S-II	PATC2000S-II	PATC2500S-II	PATC3000S-II
Maximum Total Rated Lifting Capacity	T	160	200	240	300
Overall Length	mm	15900	16130	15918	18210
Overall Width	mm	3000	3000	3080	3000
Overall Height	mm	4000	4000	4000	4000
Unit weight in the travel state	kg	7000	71000	72000	79679
1st Axle Load	kg	11500	11750	12000	11625
2nd Axle Load	kg	11700	11750	12000	11625
3rd Axle Load	kg	11700	11850	12000	11625
4th Axle Load	kg	11700	11850	12000	11201
5th Axle Load	kg	11800	11900	12000	11201
6th Axle Load	kg	11800	11900	-	11201
7h Axle Load	kg	-	-	-	11201
ENGINE					
CARRIER					
Model		MERCEDES OM502LA <small>(Made in Germany)</small>	MERCEDES OM502LA <small>(Made in Germany)</small>	MERCEDES OM502LA <small>(Made in Germany)</small>	MERCEDES OM502LA <small>(Made in Germany)</small>
Rated Power	HP/rpm	530/1800	530/1800	570/1800	570/1800
UPPER STRUCTURE					
Model		VOLVO TAD720VE <small>(Made in Sweden)</small>	VOLVO TAD720VE <small>(Made in Sweden)</small>	VOLVO TAD722VE <small>(Made in Sweden)</small>	VOLVO TAD722VE <small>(Made in Sweden)</small>
Rated Power	HP/rpm	220/2100	220/2100	265/2100	265/2100
Emission		Euro III			
TRAVEL					
Maximum Travel Speed	km/h	71	71	71	75
Minimum Turning Diameter	m	24	24	24	24
Minimum Ground Clearance	mm	278	278	280	330
Approach Angle	°	25	25	25	19
Departure Angle (°)		20/18	20/18	17.8	19
Braking Distance (at 30km/h)	m	<10	<10	<10	<10
Maximum Gradeability	%	48	48	48	40
Fuel Consumption	L	80	80	90	96
LIFTING PERFORMANCE					
Minimum Rated Working Radius	m	3	3	3	3
Turning Radius at Swing Table End	mm	4850	5070	4800	5640
Maximum Load of Base Boom	kN.m	5282	6774	7797	9526
Maximum Load of Fully Extended Boom	kN.m	2140	2752	2940	4675
Longitudinal Distance	m	9.625	9.625	9.625	9.2
Lateral Distance	m	8.7 (6.5)	8.7 (6.5)	8.7 (6.5)	8.7 (6.5)
Lifting Height of Base Boom	m	14.3	14.5	12.6	16.5
Lifting Height (with Fully Extended Boom)	m	56.3	61.5	65.6	60.8
Lifting Height (with Fully Extended Boom + Jib)	m	79	82.1	85.7	72.9
Boom Length (Base Boom)	m	13.6	13.8	13.2	15.4
Boom Length (Fully Extended Boom)	m	60	61	67	61
Boom Length (Fully Extended Boom + Jib)	m	80	81	87	76
WORKING SPEED					
Boom Raising	sec	90	90	65	90
Telescoping (Fully-Extended)	sec	550	550	650	480
Telescoping (Fully Retracted)	sec	550	550	650	480
Maximum Swing Speed	r/min	2	1.9	1.6	1.7
Outrigger Beam (Fully Extended)	sec	50	50	50	50
Outrigger Beam (Retracted)	sec	40	40	40	40
Outrigger Jack (Fully Extended)	sec	50	50	50	50
Outrigger Jack (Retracted)	sec	45	45	45	45
Main Winch	m/min	120	120	115	150
Auxiliary Winch	m/min	110	110	118	150

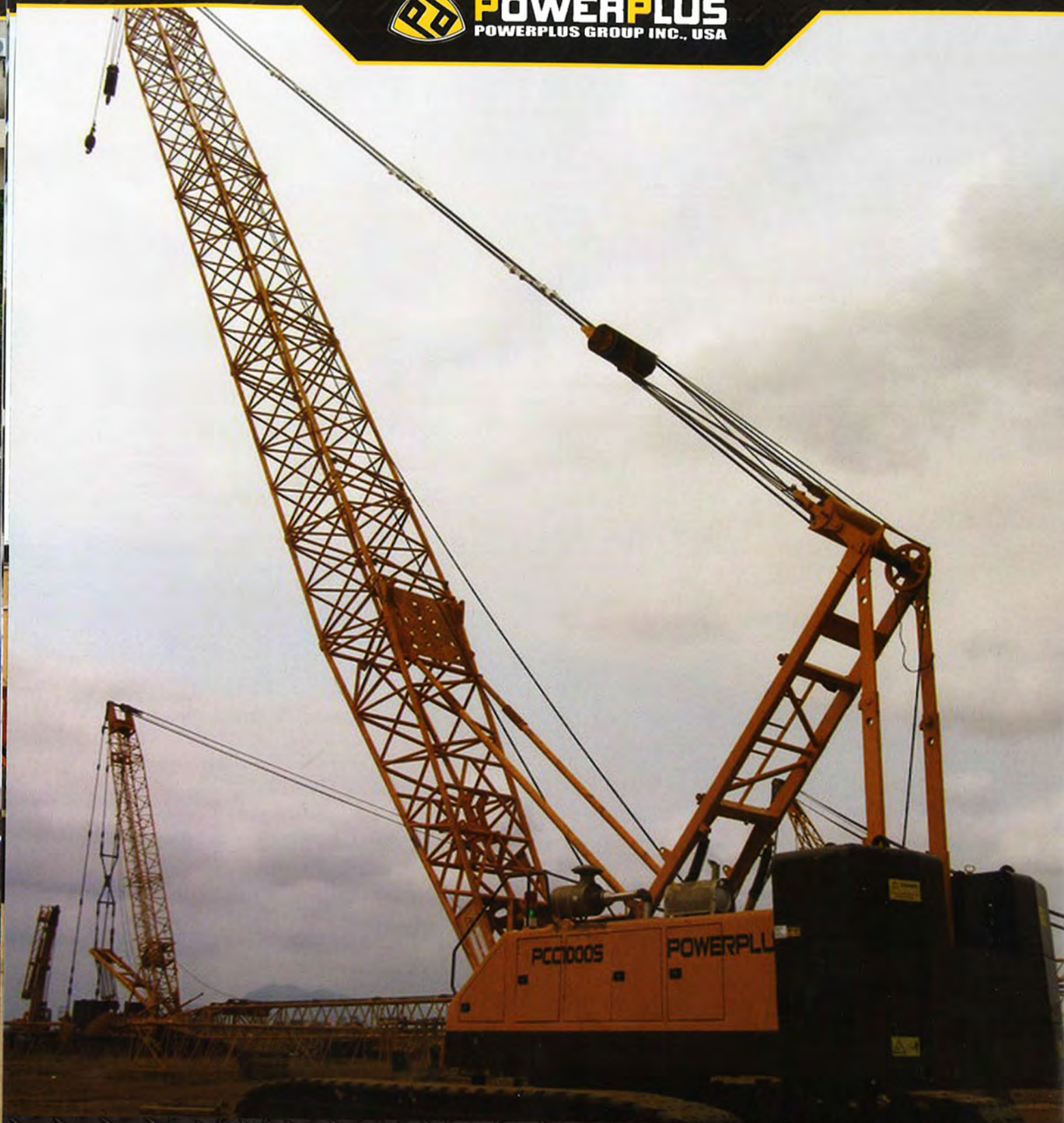
* Load chart available upon request



POWERPLUS
POWERPLUS GROUP INC., USA



POWERPLUS
POWERPLUS GROUP INC., USA



CRAWLER CRANE



CRAWLER CRANE TECHNICAL SPECIFICATIONS

MODEL		PCC500S-II	PCC800S-II	PCC1000S-II	PCC1200S-II	
Maximum Rated Lifting Capacity	T	50	80	100	120	
Main Boom Length	m	13-52	13-58	16-73	16-73	
Length of Jib	m	9.15-15.25	9-18	13-25	13-25	
Length of Main Boom + Jib	m	43+15	49+18	61+25	61+25 (Fly Jib) 49+46 (Luffing)	
Boom Angle	°	30~80	30~80	30~80	30~80	
Gradeability	%	40	30	30	30	
Track Shoes	mm	760	860	1015	1015	
Machine Weight	T	50	82	103	110	
Ground Pressure	MPa	0.069	0.082	0.07	0.08	
Counter Weight	T	17.5	24.6	34	40	
ENGINE						
Model		CUMMINS QSB6.7 <small>(Made in USA)</small>	CUMMINS QSL9 <small>(Made in USA)</small>	CUMMINS QSL9 <small>(Made in USA)</small>	CUMMINS QSL9 <small>(Made in USA)</small>	
Rated Power	HP	173	285	285	285	
Rated Speed	rpm	2000	2000	2000	2000	
Emission	Euro III					
HYDRAULIC SYSTEM						
Main Pump		Rexroth (Germany)	Rexroth (Germany)	Rexroth (Germany)	Rexroth (Germany)	
Servo Pump		Rexroth (Germany)	Rexroth (Germany)	Rexroth (Germany)	Rexroth (Germany)	
MAIN, AUX & BOOM HOIST WINCH						
Main Winch		Rexroth (Germany)	Kawasaki (Japan)	Rexroth (Germany)	Kawasaki (Japan)	
Auxiliary Winch		Rexroth (Germany)	Kawasaki (Japan)	Rexroth (Germany)	Rexroth (Germany)	
Single Line Pull	T	5.6	8	8.3	10	
Wire Rope Diameter / Length	m	Main Ø 20mm / 170m	Main Ø 26mm / 220m	Main Ø 26mm / 285m	Main Ø 26mm / 285m	
		Aux Ø 20mm / 120m	Aux. Ø 26mm / 180m	Aux. Ø 26mm / 210m	Aux. Ø 26mm / 210m	
WORKING SPEED						
Swing Valve		Rexroth (Germany)	Rexroth (Germany)	Rexroth (Germany)	Rexroth (Germany)	
Derricking Motor		Rexroth (Germany)	Rexroth (Germany)	Rexroth (Germany)	Rexroth (Germany)	
Rope Speed	Hoist	m/min	80 / 40	74 / 37	114 / 57	116 / 57
	Lower		90 / 45	74 / 37	114 / 57	116 / 57
	Boom Hoist		52	58	54	54
	Boom Lower		52	58	54	54
Swing Speed	r/min	3.2	2	0~1.96	0~1.96	
TRAVEL						
Travel Motor		Rexroth (Germany)	Rexroth (Germany)	Nabtesco (Japan)	Nabtesco (Japan)	
Travel Speed	km/h	1.3	1.1~2.2	0.9~1.3	0.9~1.3	

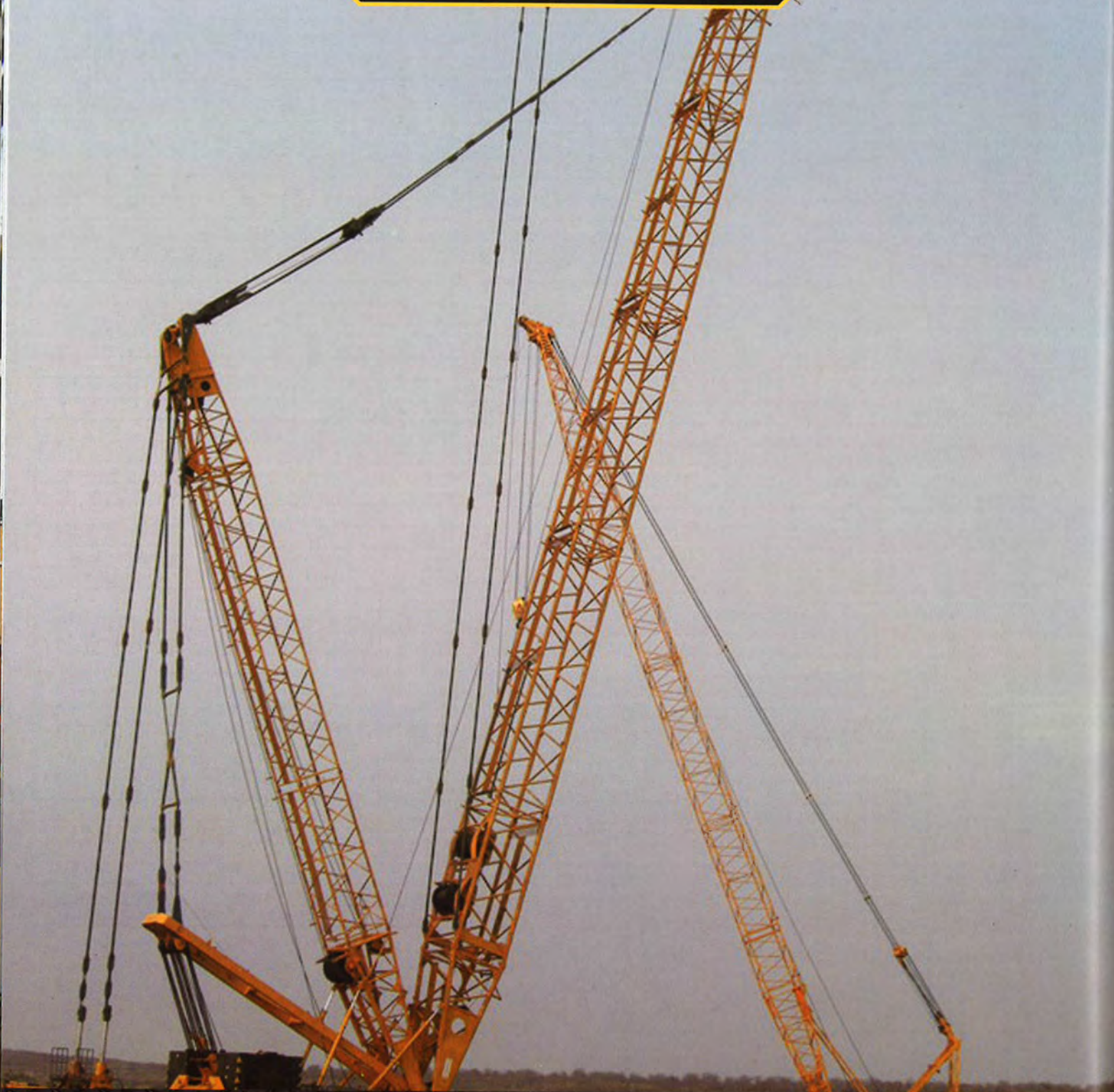
* Load chart available upon request



POWERPLUS
POWERPLUS GROUP INC., USA



POWERPLUS
POWERPLUS GROUP INC., USA



CRAWLER CRANE



CRAWLER CRANE TECHNICAL SPECIFICATIONS

MODEL		PCC1500S-II	PCC2600S-II	PCC3200SL (WITH SUPERLIFT)	PCC4000SL (WITH SUPERLIFT)	
Maximum Rated Lifting Capacity	T	150	260	320	400	
Main Boom Length	m	15.2-81.2	15.2-72.2	24-84	24-84	
Length of Jib	m	13-31	61	72	84	
Length of Main Boom + Jib	m	69+31 (Fly Jib) 54+52 (Luffing)	69+36 (Fly Jib) 60+61 (Luffing)	84+30 (Fly Jib) 72+72 (Luffing)	90+84 (Luffing)	
Boom Angle	°	30~80	30~80	30~85	30~84	
Gradeability	%	30	30	30	30	
Track Shoes	mm	1100	1200	1200	1200	
Machine Weight	T	165	215	315	325	
Ground Pressure	MPa	0.092	0.11	0.14	0.14	
Counter Weight	T	54.6	102	40+140+160	41+160+250	
ENGINE						
Model		CUMMINS QSL9 <small>(Made in USA)</small>	CUMMINS QSL9 <small>(Made in USA)</small>	CUMMINS QSM11 <small>(Made in USA)</small>	CUMMINS QSM11 <small>(Made in USA)</small>	
Rated Power	HP	285	335	400	400	
Rated Speed	rpm	2000	2100	2100	2100	
Emission		Euro III				
HYDRAULIC SYSTEM						
Main Pump		Kawasaki (Japan)	Rexroth (Germany)	Rexroth (Germany)	Rexroth (Germany)	
Pilot Pump		Kawasaki (Japan)	Rexroth (Germany)	Pal-Fin (Germany)	Pal-Fin (Germany)	
MAIN, AUX & BOOM HOIST WINCH						
Main Winch		Kawasaki (Japan)	Rexroth (Germany)	Rexroth (Germany)	Rexroth (Germany)	
Auxiliary Winch		Kawasaki (Japan)	Rexroth (Germany)	Rexroth (Germany)	Rexroth (Germany)	
Single Line Pull	T	13.5	13.5	15	15	
Wire Rope Diameter / Length	m	Main Φ26mm / 370m Aux. Φ26mm / 370m	Main Φ28mm / 415m Aux. Φ28mm / 320m	Main Φ26mm / 230mx2 Aux. Φ26mm / 500m	Main Φ26mm / 240mx2 Aux. Φ26mm / 550m	
WORKING SPEED						
Swing Valve		Kawasaki (Japan)	Rexroth (Germany)	Rexroth (Germany)	Rexroth (Germany)	
Derricking Motor		Kawasaki (Japan)	Rexroth (Germany)	Rexroth (Germany)	Rexroth (Germany)	
Rope Speed	Hoist	m/min	117-142	136	118	145
	Lower		117-142	136	118	145
	Boom Hoist		30	56	39x2	35x2
	Boom Lower		30	56	39x2	35x2
Swing Speed	r/min	2.3	1.7	1.12	1.3	
TRAVEL						
Travel Motor		Kawasaki (Japan)	Rexroth (Germany)	O & K (Germany)	Rexroth (Germany)	
Travel Speed	km/h	1.25	0.8/1.2	1.05	1.2	

* Load chart available upon request



POWERPLUS
POWERPLUS GROUP INC., USA

ROUGH TERRAIN CRANE

TECHNICAL SPECIFICATIONS

MODEL		PRTC250S-III	PRTC350S-III	PRTC550S-III	PRTC700S-III	PRTC1000S-III
Maximum Total Rated Lifting Load	kg	25000	35000	55000	70000	100000
Overall Length	mm	11750	12600	12820	13085	14955
Overall Width	mm	2980	3060	3400	3380	33100
Overall Height	mm	3600	3760	3800	3870	3890
Wheelbase	mm	3600	3950	4650	4650	4650
Tread	mm	2500	2500	2652	2520	2520
Weight	kg	27700	29000	43000	48800	49100
Minimum Ground Clearance	mm	400	400	483	480	530
ENGINE						
Model		CUMMINS ISDe 230 30	CUMMINS ISDe 230 30	CUMMINS ISDe 270 30	CUMMINS ISDe 270 30	CUMMINS ISLE310 30
Rated Power	HP	230	230	270	270	310
Rated Speed	rpm	2200	2200	2500	2500	2100
Emission		Euro III				
TRANSMISSION						
Transmission Type		Electrical controlled shifting				
No. of Gears		4 Forward, 3 Reverse				
Drive Axle		4 Wheel Drive				
AXLE						
Brand		Kessler (Germany)				
Front Axle Weight	kg	12880	15200	20710	22560	23100
Rear Axle Weight	kg	13720	13780	22290	26240	26000
BRAKE SYSTEM						
Brand		Mico (USA)				
Service Brake		Hydraulic disc brake				
Parking Brake		Hydraulic disc brake				
WORKING RANGE						
Base Boom Length	m	9.18	10	9.6	10.23	12
Fully Extended Boom Length	m	27.78	31	35	37	46
Fully Extended Boom Length + Jib	m	35.1	38.3	50	53	46+18.5
Base Boom Lifting Height	m	9.6	10.3	10.3	10.7	12.5
Fully Extended Boom Lifting Height	m	27.9	30.8	35	37	45
Fully Extended Boom+Jib Lifting Height	m	35.1	39	50	52.6	62
Outrigger Span (Longitudinal)	m	6.08	6.4	7.7	7.7	7.75
Outrigger Span (Lateral)	m	6.5	6.5	7.6	7.6	7.6
WORKING SPEED						
Luffing Time (Hoist Boom)	sec	75	75	85	85	85
Luffing Time (Lower Boom)	sec	75	75	85	85	85
Telescoping Time (Extension)	sec	80	80	120	125	125
Telescoping Time (Retraction)	sec	50	50	95	95	95
Maximum Swing Speed	r/min	2	2	2	2	2
TIRE						
Front/Rear Tire Size		20.00-25-24PR	20.00-25-24PR	26.5-25-28PR	26.5-25-28PR	29.5-25-28PR
TRAVEL						
Maximum Travel Speed	km/h	40	40	40	35	35
Maximum Gradeability	%	55	55	55	50	55
Approach Angle	°	21	21	24.5	19	24
Departure Angle	°	21	20	24.5	20	24

* Load chart available upon request



POWERPLUS
POWERPLUS GROUP INC., USA



POWERPLUS
POWERPLUS GROUP INC., USA



ROUGH TERRAIN CRANE





POWERPLUS
POWERPLUS GROUP INC., USA



TELESCOPIC CRAWLER CRANE



TELESCOPIC CRAWLER CRANE

TECHNICAL SPECIFICATIONS

MODEL		PCC550T-III	PCC650T-III	PCC1200T-III
Maximum Lifting Capacity	T	55	65	120
Boom Length	m	10.8-38	10.8-38	13.2-50
Jib Length	m	7	8/14 (8+6)	8.5/15/21
Maximum Travel Speed	km/h	0~2.13	0-1.26	0.95/1.9
Gradeability	%	40	30	30
Slew Speed	r/min	3.2	1.96	1.8
Total Weight	T	51	60	125
Boom Derricking Angle	°	-2~80	-2~83	-2~80
Ground Bearing Pressure	MPa	0.065	0.07	0.11
Rated Single Line Pull	T	6	7.5	8.3
Overall Length	mm	12500	12500	15700
Overall Width	mm	3260	3260	3480
Overall Height	mm	3110	3160	3465
Track Gauge	mm	4100	4000	4600
Shoe Length	mm	6015	6020	6825
Platform Ground Clearance	mm	1130	1225	1482
Telescoping Time (extend / retract)	sec	85	89	114
Derricking Time (raise / lower)	sec	94	99	100

ENGINE

Model		CUMMINS 6BTA5.9-180	CUMMINS QSB6.7 <small>(Made in USA)</small>	CUMMINS QSL-9 <small>(Made in USA)</small>
Rated Power	HP	132	193	285
Rated Speed	rpm	2200	2200	2200
Emission		Euro II	Euro III	Euro III

WIRE ROPE

Rope Length	m	170/120	200/130	245/185
Rope Diameter	m	20	22	22

BOOM STRUCTURE

Main Boom	U-type, five sections design made of high strength steel plate
Boom Hoist Device	Single double-acting hydraulic cylinder
Boom Telescoping Device	Four double-acting hydraulic cylinders
Load Hoist Device	Two independent winch systems, hydraulically driven.
Swing Device	360 degree swing, driven by hydraulic motor

* Load chart available upon request



POWERPLUS
POWERPLUS GROUP INC., USA



POWERPLUS
POWERPLUS GROUP INC., USA



TOWER CRANE



TOWER CRANE TECHNICAL SPECIFICATIONS

MODEL		PTC40S		PTC60S		PTC80S		
Rated Load Moment	KN·m	500		636		800		
Maximum Hoisting Capacity	T	4		6		8		
Rated Hoisting Capacity (Max. Radius)	T	0.8		1		1.3		
Working Radius	m	50		3~55		3~56		
Height	Freestanding	m		33		40		
	Attaching	m		120		120		
Hoisting Speed	Double Rate			a=2	a=4	a=2	a=4	
	Lifting Speed	m/min	9/32/64	4.5/16/32	80/40/8.5	40/20/4.25	80/40/10	40/20/5
Temperature of Working Environment	°C	-20~+40		-20~+40		-20~40		
Crane Weight	T	25.82		27.95		42.428		
Maximum Wing Speed	N/m ²	250		250		250		
Hoisting Mechanism	Electromotor	Power	kW		15/15/4		24/24/5.4	
		Slewing Speed	r/min		1440/720/220		1450/720/165	
	Reduction Drive	Center Distance	mm		450		590	
		Speed Reduction Ratio			12.64		15.07	
	Arrester	Brake Moment	N.m		450		315-630	

MODEL		PTC100S		PTC120S		PTC160S		
Rated Load Moment	KN·m	1600		2500		2500		
Maximum Hoisting Capacity	T	10		12		16		
Rated Hoisting Capacity (Max. Radius)	T	1.6		3.2		2.7		
Working Radius	m	65		70		70		
Height	Freestanding	m		50		52.5		
	Attaching	m		200		225		
Hoisting Speed	Double Rate			a=2	a=4	a=2	a=4	
	Lifting Speed	m/min	105/55/33	53/27/16	0-45	0-90	80/40/10	40/20/5
Temperature of Working Environment	°C	-20~40		-20~+40		-20~40		
Crane Weight	T	65		72		74		
Maximum Wing Speed	N/m ²	250		250		250		
Hoisting Mechanism	Electromotor	Power	kW		37		55	
		Slewing Speed	r/min		1438/718		1450	
	Reduction Drive	Center Distance	mm		600		590	
		Speed Reduction Ratio			15.75		35.7	
	Arrester	Brake Moment	N.m		630-1250		1000	

*Topkit, Topless, Luffing and Portable tower crane are available upon enquiry.



POWERPLUS
POWERPLUS GROUP INC., USA



DUMP TRUCK



DUMP TRUCK

TECHNICAL SPECIFICATIONS

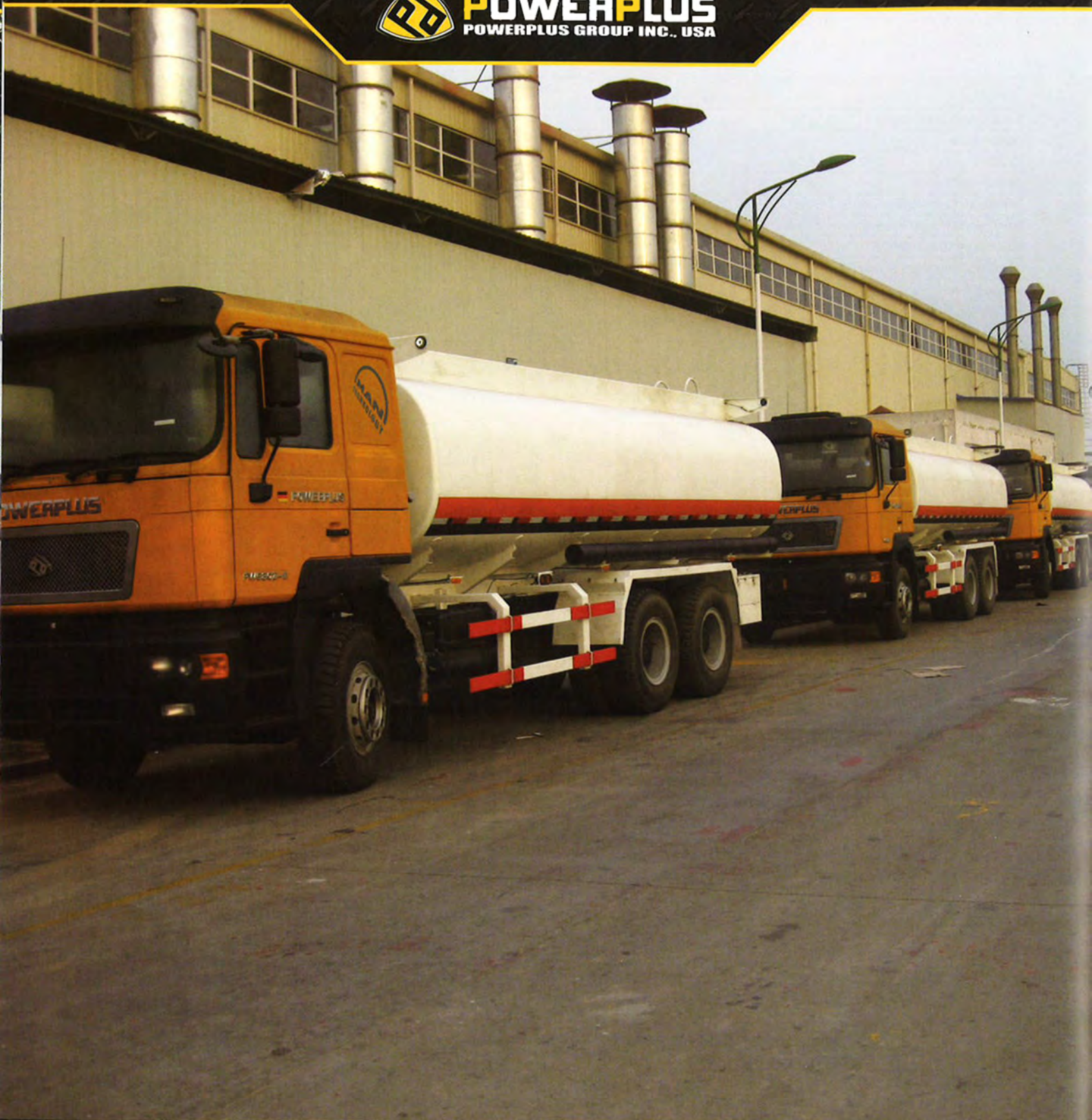
MODEL		PD480Z-II	PD680Z-II	PD686Z-II	PD880Z-II
Maximum Laden Mass	kg	6500	18000	18000	21100
Kerb Mass	kg	9500	14500	14500	17900
GVM	kg	16000	32500	32500	39000
Maximum Speed	km/h	75	75	75	75
Minimum Turning Radius	m	9.3	9.3	9.3	12
Minimum Ground Clearance	mm	314	314	314	314
Maximum Gradeability	%	28	37	37	32
Overall Dimension (LxWxH)	mm	7374 x 2490 x 3450	8329 x 2490 x 3450	8329 x 2490 x 3450	11980 x 2490 x 3450
Wheelbase	mm	3800	3800 + 1350	3800 + 1350	1800 + 4500 + 1350
Overhang (front/rear)	mm	1525 / 2054	1525 / 1654	1525 / 1654	1525 / 2805
Track Width (front/rear)	mm	2036 / 1800	2036 / 1860	1860	1860
DUMP BODY					
Dump Length	mm	4200	5600	5600	7600
Dump Width	mm	2300	2300	2300	2300
Dump Height	mm	1000	1400	1400	1500
Dump Capacity	m ³	9.6	18	18	26
Floor Thickness	mm	8	8	8	8
Sideboard Thickness	mm	4	4	4	4
ENGINE					
Model		STEYR WP10.290E32	STEYR WD12.375 / STEYR WD12.336	STEYR WD12.375 / STEYR WD12.336	STEYR WD12.375 / STEYR WD12.420
Rated Power	HP	290	375 / 336	375 / 336	375 / 420
Rated Speed	rpm	2200	2200	2200	2200
Emission		Euro II			
CABIN					
Type		MAN-POWERPLUS continental interior styling with air conditioning, MP3/Radio, double doors and sleeper with tipping capability.			
TRANSMISSION					
Model		FAST 9JS119	FAST RTD-11509C	FAST 9JS150	FAST 9JS180
GEAR RATIO	F1	12.11	12.42	12.36	12.65
	F2	8.08	8.3	7.35	8.38
	F3	5.93	6.08	5.20	6.22
	F4	4.42	4.54	3.77	4.57
	F5	3.36	3.36	2.76	3.40
	F6	2.41	2.47	1.95	2.46
	F7	1.76	1.81	1.38	1.83
	F8	1.32	1.35	1.00	1.34
	F9	1.00	1.00	0.73	1.00
	R1	12.66	12.99	12.93	13.22
STEERING UNIT					
Type		ZF Technology, LHD/RHD			
CLUTCH					
Type		Single plate, Φ 430 diaphragm			
FUEL CAPACITY					
Fuel Tank Capacity	L	380	380	380	380
TIRES					
Number of Tires		6+1	10+1	10+1	12+1
Tire Size		12.00R20	12.00R20	12.00R20	12.00R20
Drive Axle		4 x 2	6 x 4	6 x 6	8 x 4
OPTIONAL CONFIGURATION					
Model		PD480ZC-III	PD680ZC-III	PD686ZC-III	PD880ZC-III
Engine		CUMMINS ISMe 345 30	CUMMINS ISMe 385 30	CUMMINS ISMe 385 30	CUMMINS ISMe 385 30 CUMMINS ISMe 420 30
Rated Power		345	385	385	385 / 420
Rated Speed		1900	1900	1900	1900 / 2100
Emission		Euro III			



POWERPLUS
POWERPLUS GROUP INC., USA



POWERPLUS
POWERPLUS GROUP INC., USA



FUEL TANKER



FUEL TANKER

TECHNICAL SPECIFICATIONS

MODEL		PF480Z-II	PF680Z-II	PF880Z-II
Maximum Laden Mass	kg	11600	19000	27000
Kerb Mass	kg	8900	14500	18000
GVM	kg	20500	33500	45000
Maximum Speed	km/h	92	92	85
Minimum Turning Radius	m	12	12	12
Minimum Ground Clearance	mm	315	315	314
Maximum Gradeability	%	28	28	37
Overall Dimension (LxWxH)	mm	8385 x 2490 x 3450	9719 x 2500 x 3400	9800 x 2500 x 3670
Wheelbase	mm	4600	4300+1350	1800+4575+1350
Overhang (front/rear)	mm	1525 / 1710	1525 / 2519	1525 / 2325
Track Width (front/rear)	mm	2036 / 1800	2036 / 1800	1860
TANKER BODY				
Capacity	m ³	14	16	30
ENGINE				
Model		STEYR WP10.270	STEYR WP10.290E32	STEYR WD12.375
Rated Power	HP	270	290	375
Rated Speed	rpm	2200	2200	2200
Emission		Euro II		
CABIN				
Type		MAN-POWERPLUS continental interior styling with air conditioning, MP3/Radio, double doors and sleeper with tipping capability.		
TRANSMISSION				
Model		FAST 9JS119	FAST 9JS135	FAST 9JS135
GEAR RATIO	F1	12.11	12.11	12.11
	F2	8.08	8.08	8.08
	F3	5.93	5.93	5.93
	F4	4.42	4.42	4.42
	F5	3.36	3.36	3.36
	F6	2.41	2.41	2.41
	F7	1.76	1.76	1.76
	F8	1.32	1.32	1.32
	F9	1.00	1.00	1.00
	R1	12.66	12.66	12.66
STEERING UNIT				
Type		ZF Technology, LHD/RHD		
CLUTCH				
Type		Single plate, Φ 430 diaphragm		
FUEL CAPACITY				
Fuel Tank Capacity	L	380	380	380
TIRES				
Number of Tires		6+1	10+1	12+1
Tire Size		12.00R20	12.00R20	12.00R20
Axle Drive		4 x 2	6 x 4	8 x 4
OPTIONAL CONFIGURATION				
Model		PF480ZC-III	PF680ZC-III	PF880ZC-III
Engine		CUMMINS ISMe 345 30	CUMMINS ISMe 345 30	CUMMINS ISMe 385 30
Rated Power		345	345	385
Rated Speed		1900	1900	1900
Emission		Euro III		



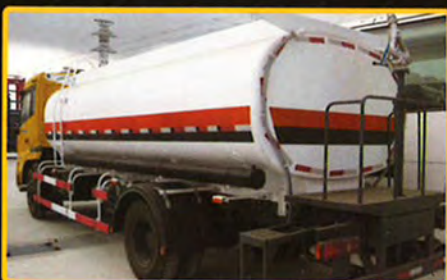
POWERPLUS
POWERPLUS GROUP INC., USA



POWERPLUS
POWERPLUS GROUP INC., USA



WATER TANKER



WATER TANKER

TECHNICAL SPECIFICATIONS

MODEL		PW480Z-II	PW680Z-II	PW880Z-II
Maximum Laden Mass	kg	11600	19000	27000
Kerb Mass	kg	8900	14500	18000
GVM	kg	20500	33500	45000
Maximum Speed	km/h	92	92	85
Minimum Turning Radius	m	12	12	12
Minimum Ground Clearance	mm	315	315	314
Maximum Gradeability	%	28	28	37
Overall Dimension (LxWxH)	mm	8385 x 2490 x 3450	9719 x 2500 x 3400	9800 x 2500 x 3670
Wheelbase	mm	4600	4300+1350	1800+4575+1350
Overhang (front/rear)	mm	1525 / 1710	1525 / 2519	1525 / 2325
Track Width (front/rear)	mm	2036 / 1800	2036 / 1800	1860
TANKER BODY				
Capacity	m ³	14	16	30
ENGINE				
Model		STEYR WP10.270	STEYR WP10.290E32	STEYR WD12.375
Rated Power	HP	270	290	375
Rated Speed	rpm	2200	2200	2200
Emission		Euro II		
CABIN				
Type		MAN-POWERPLUS continental interior styling with air conditioning, MP3/Radio, double doors and sleeper with tipping capability.		
TRANSMISSION				
Model		FAST 9JS119	FAST 9JS135	FAST 9JS135
GEAR RATIO	F1	12.11	12.11	12.11
	F2	8.08	8.08	8.08
	F3	5.93	5.93	5.93
	F4	4.42	4.42	4.42
	F5	3.36	3.36	3.36
	F6	2.41	2.41	2.41
	F7	1.76	1.76	1.76
	F8	1.32	1.32	1.32
	F9	1.00	1.00	1.00
	R1	12.66	12.66	12.66
STEERING UNIT				
Type		ZF Technology, LHD/RHD		
CLUTCH				
Type		Single plate, Φ430 diaphragm		
FUEL CAPACITY				
Fuel Tank Capacity	L	380	380	380
TIRES				
Number of Tires		6+1	10+1	12+1
Tire Size		12.00R20	12.00R20	12.00R20
Axle Drive		4 x 2	6 x 4	8 x 4
OPTIONAL CONFIGURATION				
Model		PW480ZC-III	PW680ZC-III	PW880ZC-III
Engine		CUMMINS ISMe 345 30	CUMMINS ISMe 345 30	CUMMINS ISMe 385 30
Rated Power		345	345	385
Rated Speed		1900	1900	1900
Emission		Euro III		



POWERPLUS
POWERPLUS GROUP INC., USA



POWERPLUS
POWERPLUS GROUP INC., USA



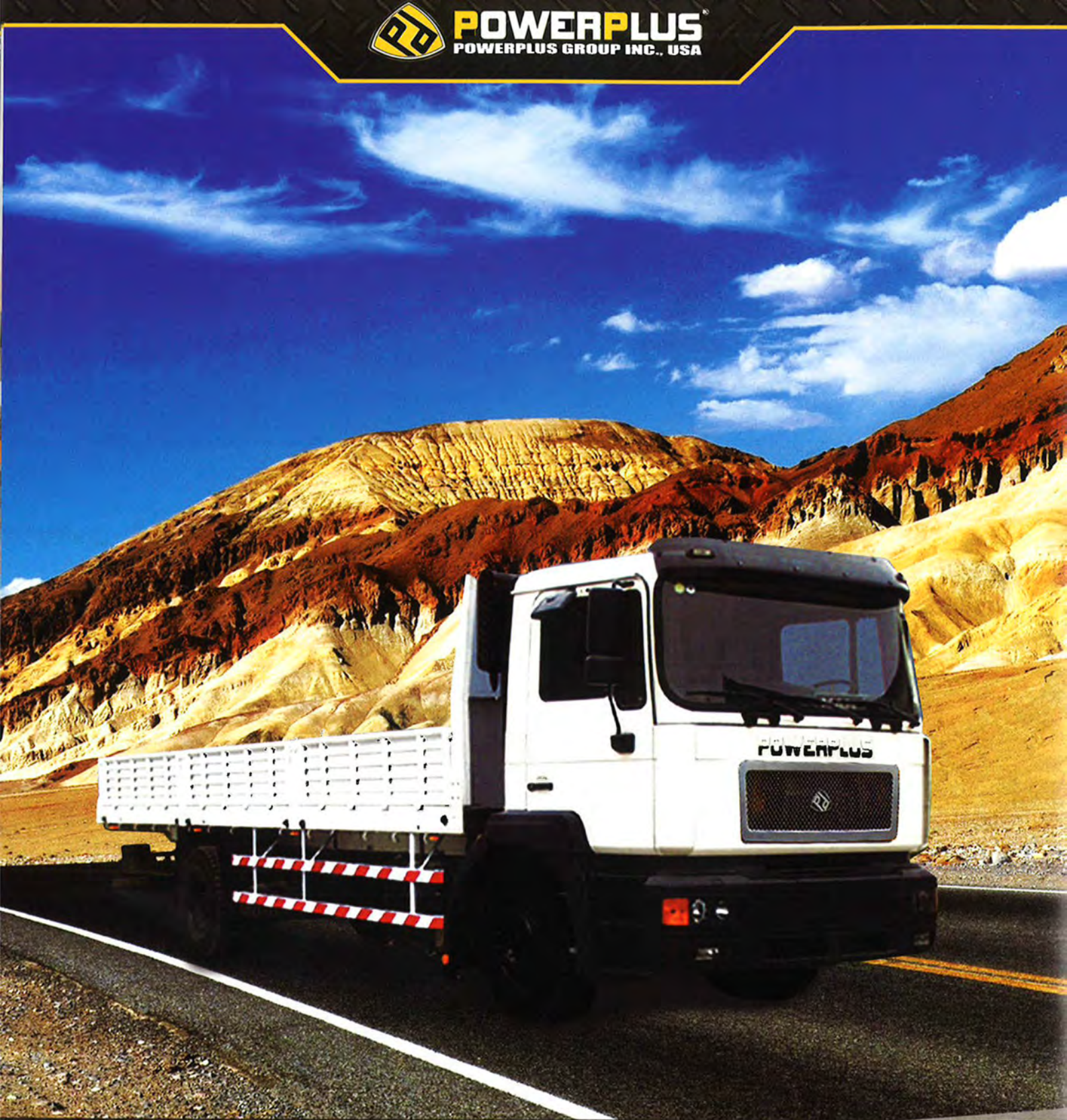
TRACTOR HEAD



TRACTOR HEAD

TECHNICAL SPECIFICATIONS

MODEL		PT480Z-II	PT680Z-II	PT686Z-II	PT880Z-II
Kerb Mass	kg	7400	9400	9400	10500
GVM	kg	18000	25000	25000	39000
GCW	kg	43000	49000	49000	52000
Maximum Speed	km/h	100	100	100	100
Minimum Turning Radius	m	7.5	7.6	7.5	9.3
Minimum Ground Clearance	mm	314	314	314	314
Maximum Gradeability	%	25	22	33	22
Fifth Wheel	inch	2	2	2	2
Overall Dimension (LxWxH)	mm	6150 x 2490 x 2490	6600 x 2490 x 3800	7475 x 2490 x 3450	7775 x 2490 x 3825
Wheelbase	mm	3500	2925 + 1350	3775 + 1400	1800 + 2300 + 1350
Overhang (front/rear)	mm	1525 / 1105	1525 / 825	1485 / 725	1525 / 800
Track Width (front/rear)	mm	2036/1800	2035 / 1800	1860 / 1860	2036
ENGINE					
Model		STEYR WP10.290E32	STEYR WD12.375 / STEYR WD12.420	STEYR WD12.375 / STEYR WD12.420	STEYR WD12.420 / STEYR WD12.375
Rated Power	HP	290	375 / 420	375 / 420	420 / 375
Rated Speed	rpm	2200	2200	2200	2200
Emission	Euro II				
TRANSMISSION					
Model		FAST 9JS119	FAST 9JS180	FAST 9JS180	FAST 12JS180T
GEAR RATIO	F1	12.11	12.65	12.65	15.53
	F2	8.08	8.38	8.36	12.08
	F3	5.93	6.22	6.22	9.39
	F4	4.42	4.57	4.57	7.33
	F5	3.36	3.40	3.40	5.73
	F6	2.41	2.46	2.46	4.46
	F7	1.76	1.83	1.83	3.48
	F8	1.32	1.34	1.34	2.71
	F9	1.00	1.00	1.00	2.10
	F10	-	-	-	1.64
	F11	-	-	-	1.28
	12	-	-	-	1.00
R1	12.66	13.22	13.22	14.86	
R1	-	-	-	3.33	
CABIN					
Type	MAN-POWERPLUS continental interior styling with air conditioning, MP3/Radio, double doors and sleeper with tipping capability.				
STEERING UNIT					
Type	ZF Technology, LHD / RHD				
CLUTCH					
Type	Single plate, Φ 430 diaphragm Spring				
FUEL CAPACITY					
Fuel Tank Capacity	L	380	380	380	380
TIRES					
Number of Tires		6+1	10+1	10+1	12+1
Tire Size		12.00R20	12.00R20	12.00R20	12.00R20
Axle Drive		4 x 2	6 x 4	6 x 6	8x4
OPTIONAL CONFIGURATION					
Model		PT480ZC-III	PT680ZC-III	PT686ZC-III	PT880ZC-III
Engine		CUMMINS ISMe 345 30	CUMMINS ISMe 385 30 / CUMMINS ISMe 420 30	CUMMINS ISMe 385 30 / CUMMINS ISMe 420 30	CUMMINS ISMe 420 30 / CUMMINS ISMe 385 30
Rated Power		345	385 / 420	385 / 420	420 / 385
Rated Speed		1900	1900 / 2100	1900 / 2100	2100 / 1900
Emission		Euro III			



CARGO TRUCK



CARGO TRUCK TECHNICAL SPECIFICATIONS

MODEL		PC480Z-II	PC680Z-II	PC880Z-II
Maximum Laden Mass	kg	6500	13500	19500
Kerb Mass	kg	9500	11500	11500
GVM	kg	16000	25000	31000
Maximum Speed	km/h	93	93	85
Minimum Turning Radius	m	9.5	10.3	10.3
Minimum Ground Clearance	mm	314	314	314
Maximum Gradeability	%	50	32	32
Overall Dimension (LxWxH)	mm	7990 x 2490 x 3250	10435 x 2490 x 3250	11990 x 2490 x 3250
Wheelbase	mm	4600	4600+1350	1800+4500+1350
Overhang (front/rear)	mm	1525 / 2165	1525 / 2625	1576/3190
Track Width (front/rear)	mm	2036 / 1800	1939 / 1800	1860
CARGO BODY				
Body Length	mm	6700	7950	9500
Body Width	mm	2326	2326	2326
Body Height	mm	600	600	600
Body Capacity	m ³	9	11	13
ENGINE				
Model		STEYR WP10.290E32	STEYR WD12.336 / STEYR WD12.375	STEYR WD12.375
Rated Power	HP	290	336 / 375	375
Rated Speed	rpm	2200	2200	2200
Emission Standard		Euro II		
TRANSMISSION				
Model		FAST 9JS119	FAST 9JS119	FAST 9JS180
G E A R R A T I O	F1	12.11	12.11	12.65
	F2	8.08	8.08	8.36
	F3	5.93	5.93	6.22
	F4	4.42	4.42	4.57
	F5	3.36	3.36	3.40
	F6	2.41	2.41	2.46
	F7	1.76	1.76	1.83
	F8	1.32	1.32	1.34
	F9	1.00	1.00	1.00
	R1	12.66	12.66	13.22
R2	-	-	-	
CABIN				
Type	MAN-POWERPLUS continental interior styling with air conditioning, MP3/Radio, double doors and sleeper with tipping capability.			
STEERING UNIT				
Type	ZF Technology, LHD/RHD			
CLUTCH				
Type	Single plate, Φ 430 diaphragm spring			
FUEL CAPACITY				
Fuel Tank Capacity	L	380	380	380
TIRES				
Number of Tires		6+1	10+1	12+1
Tire Size		12.00R20	12.00R20	12.00R20
Axle Drive		4 x 2	6 x 4	8 x 4
OPTIONAL CONFIGURATION				
Model		PC480ZC-III	PC680ZC-III	PC880ZC-III
Engine		CUMMINS ISMe 345 30	CUMMINS ISMe 345 30	CUMMINS ISMe 385 30
Rated Power		345	345	385
Rated Speed		1900	1900	1900
Emission		Euro III		



POWERPLUS
POWERPLUS GROUP INC., USA



POWERPLUS
POWERPLUS GROUP INC., USA



GARBAGE COMPACTOR



GARBAGE COMPACTOR

TECHNICAL SPECIFICATIONS

MODEL		PGC480Z-II	PGC680Z-II
Maximum Laden Mass	kg	5600	14600
Kerb Mass	kg	10400	10400
GVM	kg	16000	25000
Maximum Speed	km/h	74	74
Minimum Turning Radius	m	9.3	8.5
Minimum Ground Clearance	mm	314	314
Maximum Gradeability	%	28	33
Overall Length (LxWxH)	mm	7990 x 2490 x 3250	10150 x 2490 x 3250
Wheelbase	mm	3800	4600 + 1350
Overhang (front/rear)	mm	1525 / 2160	1526 / 2675
Track Width (front/rear)	mm	2036 / 1800	2050 / 1860
GARBAGE COMPACTOR			
Volume	m ³	10	20
ENGINE			
Model		STEYR WP10.290E32	STEYR WD12.336 / STEYR WD12.375
Rated Power	HP	290	336 / 375
Rated Speed	rpm	2200	2200
Emission		Euro II	
TRANSMISSION			
Model		FAST 8JS118	FAST RTD-11509C
GEAR RATIO	F1	11.4	12.42
	F2	7.94	8.3
	F3	5.63	6.08
	F4	4.06	4.54
	F5	2.81	3.36
	F6	1.96	2.47
	F7	1.39	1.81
	F8	1	1.35
	F9	-	1.00
	R1	11.35	12.99
R2	-	-	
CABIN			
Type		MAN-POWERPLUS continental interior styling with air conditioning, MP3/Radio, double doors and sleeper with tipping capability.	
STEERING UNIT			
Type		ZF Technology, LHD/RHD	
CLUTCH			
Type		Single plate, Φ430 diaphragm	
FUEL CAPACITY			
Fuel Tank Capacity	L	380	380
TIRES			
Number of Tires		6+1	10+1
Tire Size		12.00R20	12.00R20
Axle Drive		4 x 2	6 x 4
OPTIONAL CONFIGURATION			
Model		PGC480ZC-III	PGC680ZC-III
Engine		CUMMINS ISMe 345 3C	CUMMINS ISMe 345 3C
Rated Power		345	345
Rated Speed		1900	1900
Emission		Euro III	



POWERPLUS
POWERPLUS GROUP INC., USA



POWERPLUS
POWERPLUS GROUP INC., USA



CONCRETE MIXER TRUCK



CONCRETE MIXER TRUCK

TECHNICAL SPECIFICATIONS

MODEL		PM680Z-II	PM880Z-II
Maximum Laden Mass	kg	11500	15100
Kerb Mass	kg	13500	15900
GVM	kg	25000	31000
Maximum Speed	km/h	75	76
Minimum Turning Radius	m	9.5	12
Minimum Ground Clearance	mm	314	314
Maximum Gradeability	%	28	32
Overall Dimension (LxWxH)	mm	9130 x 2500 x 3900	10432 x 2500 x 3900
Wheelbase	mm	3600 + 1350	1800 + 3200 + 1350
Overhang (front/rear)	mm	1525 / 2460	1525 / 2560
Track Width (front/rear)	mm	2036 / 1800	2011 / 1860
MIXER BODY			
Body Capacity	m ³	9	14
ENGINE			
Model		STEYR WD12.336 / STEYR WD12.375	STEYR WD12.375
Rated Power	HP	336 / 375	375
Rated Speed	rpm	2200	2200
Emission Standard		Euro II	
TRANSMISSION			
Model		FAST RTD-11509C	FAST 9JS180
G E A R R A T I O	F1	12.42	12.65
	F2	8.3	8.38
	F3	6.08	6.22
	F4	4.54	4.57
	F5	3.36	3.40
	F6	2.47	2.46
	F7	1.81	1.83
	F8	1.35	1.34
	F9	1.00	1.00
	R1	12.99	13.22
CABIN			
Type	MAN-POWERPLUS continental interior styling with air conditioning, MP3/Radio, double doors and sleeper with tipping capability.		
STEERING UNIT			
Type	ZF Technology, LHD/RHD		
CLUTCH			
Type	Single plate, Φ430 diaphragm spring		
FUEL CAPACITY			
Fuel Tank Capacity	L	380	380
TIRES			
Number of Tires		10+1	12+1
Tire Size		12.00R20	12.00R20
Axle Drive		6 x 4	8 x 4
OPTIONAL CONFIGURATION			
Model		PM680ZC-III	PM880ZC-III
Engine		CUMMINS ISMe 345 30	CUMMINS ISMe 385 30
Rated Power		345	385
Rated Speed		1900	1900
Emission		Euro III	



POWERPLUS
POWERPLUS GROUP INC., USA



POWERPLUS
POWERPLUS GROUP INC., USA



HEAVY DUTY DUMP TRUCK



HEAVY DUTY DUMP TRUCK

TECHNICAL SPECIFICATIONS

MODEL		PD3340Z-II	PD3360Z-II	PD3460Z-II	PD3660Z-II	PD3366Z-II
Kerb Mass	kg	19000	19000	22000	26000	22000
Maximum Laden Mass	kg	30000	32000	40000	60000	30000
GVM	kg	49000	51000	62000	86000	52000
Dump Size Capacity	m ³	21	19	24	33	18
Axle Drive		4x2	6x4	6x4	6x4	6x6
Overall Length	mm	8100	8310	8530	8900	8988
Overall Width	mm	3340	3100	3100	3400	3250
Overall Height	mm	3600	3500	3200	3950	3646
Wheelbase	mm	4000	3400 + 1400	3600 + 1500	3800 + 1500	3710 + 1750
Front Tread	mm	2480	2330	2360	2480	2600
Rear Tread	mm	2500	2256	2252	2500	2600
Minimum Ground Clearance	mm	370	349	355	385	512
Gradeability	%	38	35	36	32	38
Maximum Speed	km/h	50	42	42	42	42
Fuel Tank Capacity	L	380	380	400	500	380
ENGINE						
Model		STEYR WP12.340	STEYR WP12.340	STEYR WP12.380 CUMMINS QSM11	STEYR WP12.430 CUMMINS QSM11	STEYR WP12.430 CUMMINS QSM11
Rated Power	HP	340	340	380 / 385	430 / 420	430 / 385
Rated Speed	rpm	2200	2200	2200 / 1900	2200 / 1900	2200 / 1900
CLUTCH						
Type	Valeo (France) Clutch , dry single disk, round placed spring					
TRANSMISSION						
Model		FAST 7DS135	FAST 7DS135	FAST 7DS180	FAST 7DS180	FAST 7DS180
Gears	Forward 7 & Reverse 1					
CABIN						
Type	With air conditioner, CD Player, double doors and tippable cabin. Designer upholstery.					
AXLE						
Type	Double hub reducer cast steel axle					
STEERING SYSTEM						
Type	Hydraulic double steering					
BRAKE SYSTEM						
Service Brake	Pneumatic pressure, Drum brake					
Parking Brake	Double circuit spring energy storage braking					
TIRE						
Tire Size		14.00-25-36PR	14.00-20-20PR	14.00-24-28PR	14.00-25-36PR	18.00-25-32PR



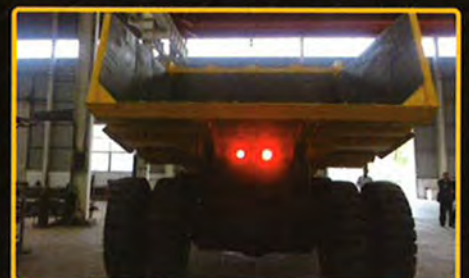
POWERPLUS
POWERPLUS GROUP INC., USA



POWERPLUS
POWERPLUS GROUP INC., USA



RIGID DUMP TRUCK



RIGID DUMP TRUCK

TECHNICAL SPECIFICATIONS

MODEL		PRD500Z	PRD550Z-II	PRD1000Z-II
Net Weight	kg	28000	32000	68620
Rated Payload	kg	45000	50000	91000
Max. Gross Weight	kg	73000	82000	160000
Volumes-Struck	m ³	26	30	41.6
Volumes-Heaped (2:1)	m ³	32	36	57
Max. Speed-Loaded	km/h	55	52	47.6
ENGINE				
Model		CUMMINS QSZ13-C450	CUMMINS QSZ13-C525	CUMMINS KTA38-C1050
Rated Power	HP/rpm	455/1900	531/1900	1050/2100
Type		Turbocharged, Aftercooled		
Max. Torque	N.m	2250	2580	4631
No of Cylinders		6	6	6
Bore x Stroke		130x163	130x163	159x159
Displacement	L	13	13	37.7
TRANSMISSION				
Model		Allison 4500ORS-PR <small>(Made in USA)</small>	Allison H5620AR <small>(Made in USA)</small>	Allison H8610AR CEC2 <small>(Made in USA)</small>
Type		Automatic electronic control, integral torque converter and planetary gearing, six speeds forward, one reverse, automatic lock-up in all speed ranges.		
1 st Ratio		4.7	4	4.24
2 nd Ratio		2.21	2.68	2.32
3 rd Ratio		1.53	2.01	1.69
4 th Ratio		1	1.35	1.31
5 th Ratio		0.76	1	1
6 th Ratio		0.67	0.67	0.73
R1		5.55	5.15	5.75
DRIVE AXLE				
Type		Drive axle with single reduction spiral bevel gear differential and planetary reduction, full floating axle shafts, heavy duty axle, big transmission ratio design, strong driving force		
Differential Ratio		3.42	3.42	2.16
Planetary Ratio		4.47	6	13.75
Total Reduction		15.287	20.52	29.7
SUSPENSION				
Cylinder Stroke (Front)	mm	350	350	235
Cylinder Stroke (Rear)	mm	245	245	175
Rear Axle Oscillation	°	±4.9	±4.9	7
HOIST				
System Pressure	MPa	14-16	16-20	19
Body Raise Time	sec	28	25	16.3
Body Lower Time	sec	25	25	18
TIRE				
Size		18.00-25(40PR)E-4	21.00-35(40PR) E-4	27.00-49 (48PR)E-4



POWERPLUS
POWERPLUS GROUP INC., USA



POWERPAC
POWERPAC INTERNATIONAL INC., USA



VIBRATORY ROLLER



VIBRATORY ROLLER

TECHNICAL SPECIFICATIONS

MODEL		CV300D-III	CV302D-III	CV308D-III	CV308M-III
Operating Weight	kg	10600	12000	14000	14000
Length	mm	5717	5688	5688	6105
Width	mm	2250	2270	2270	2332
Height	mm	3264	3200	3200	3195
Minimum Turning Radius	mm	6300	6300	6300	6500
Drum Width	mm	2130	2130	2130	2130
Wheelbase	mm	2935	2935	2935	3055
Gradeability	%	50	50	45	25
Ground Clearance	mm	350	350	350	350
Static Linear Force	N/cm	277	333	385	322
Vibration Amplitude (High)	mm	1.7	1.7	1.7	1.7
Vibration Amplitude (Low)	mm	0.85	0.85	0.85	0.8
Vibration Frequency (High)	Hz	30	30	30	28
Vibration Frequency (Low)	Hz	30	30	30	28
Centrifugal Force (High)	kN	225	247	260	250
Centrifugal Force (Low)	kN	112	127	130	125
ENGINE					
Model		CUMMINS 4BTA3.9	CUMMINS 6BT5.9	CUMMINS 6BTAA5.9	FUJI FE6150TDI
Rated Power	HP	126	152	152	150
Rated Speed	rpm	2200	2400	2200	2100
OIL CAPACITY					
Fuel (Diesel)	L	200	200	200	260
Engine Oil	L	15	15	15	15
TRANSMISSION SYSTEM					
Drive Type		Hydraulic	Hydraulic	Hydraulic	Mechanical
Maximum Travelling Speed	km/h	10.4	9.2	9.2	8.8
AXLE					
Type of Main Reducer		Spiral bevel gear, Single stage			
TIRE					
Size of Tire		23.1-26	23.1-26	23.1-26	23.1-26
Ply Rating		12	12	12	12
HYDRAULIC SYSTEM					
Drive Pump / Motor		REXROTH (Germany)	REXROTH (Germany)	REXROTH (Germany)	N.A
Vibrating Pump / Motor		PERMCO (USA)	PERMCO (USA)	PERMCO (USA)	PERMCO (USA)
STEERING SYSTEM					
Type		Mid Articulated Frame, Co-axis flow amp.			



POWERPAC
POWERPAC INTERNATIONAL INC., USA



VIBRATORY ROLLER



VIBRATORY ROLLER

TECHNICAL SPECIFICATIONS

MODEL		CV320D-III	CV320M-III	CV328D-III	CV328M-III	CV338D-III	CV338M-III
Operating Weight	kg	18000	18000	20000	20000	26000	25500
Length	mm	6665	6665	6665	6432	7025	7025
Width	mm	2280	2280	2300	2300	2360	2360
Height	mm	3090	3090	3090	3090	3090	3090
Minimum Turning Radius	mm	7500	7500	7500	7500	7500	7500
Drum Width	mm	2100	2100	2100	2100	2100	2100
Wheelbase	mm	3380	3380	3380	3380	3535	3535
Gradeability	%	35	30	35	30	35	30
Ground Clearance	mm	432	435	432	432	432	432
Static Linear Force	N/cm	540	470	600	500	695	610
Vibration Amplitude (High)	mm	1.9	1.9	1.9	1.9	1.9	1.9
Vibration Amplitude (Low)	mm	0.95	0.95	0.95	0.95	0.95	0.95
Vibration Frequency (High)	Hz	35	30	35	30	35	35
Vibration Frequency (Low)	Hz	28	30	28	30	28	28
Centrifugal Force (High)	kN	390	390	410	410	460	460
Centrifugal Force (Low)	kN	280	280	300	300	360	360
ENGINE							
Model		CUMMINS 6BTA5.9	POWERPLUS PE6180TDI	CUMMINS 6BTA5.9	POWERPLUS PE6180TDI	CUMMINS 6CTA8.3	POWERPLUS PE6190TDI
Rated Power	HP	180	180	180	180	215	190
Rated Speed	rpm	2300	2000	2300	2000	2200	2000
OIL CAPACITY							
Fuel (Diesel)	L	270	200	270	270	270	200
Engine Oil	L	28	22	28	22	28	28
TRANSMISSION SYSTEM							
Drive Type		Hydraulic	Mechanical	Hydraulic	Mechanical	Hydraulic	Mechanical
Travelling Speed	km/h	11	10.5	11	10.5	11	10.5
AXLE							
Type of Main Reducer		Spiral bevel gear, Single stage					
TIRE							
Size of Tire		23.1-26	23.1-26	23.1-26	23.1-26	23.1-26	23.1-26
Ply Rating		12	12	12	12	14	14
HYDRAULIC SYSTEM							
Drive Pump / Motor		REXROTH (Germany)	N.A	REXROTH (Germany)	N.A	REXROTH (Germany)	
Vibrating Pump / Motor		REXROTH (Germany)	PERMCO (USA)	REXROTH (Germany)	PERMCO (USA)	REXROTH (Germany)	
STEERING SYSTEM							
Type		Mid Articulated Frame, Co-axis flow amp.					



TANDEM ROLLER



TANDEM ROLLER

TECHNICAL SPECIFICATIONS

MODEL		CT328H-V	CT338H-V	CT348H-V	CT418H-III	CT428H-III	CT436H-VI	CT438H-III	CT468H-III
Operating Load	kg	1800	3000	4000	7000	10000	11000	12000	14000
Front Axle Load	kg	1000	1500	2000	3500	5000	5500	6000	7000
Rear Axle Load	kg	800	1500	2000	3500	5000	5500	6000	7000
Length	mm	2080	2650	2650	4518	4990	4850	5060	5150
Width	mm	1000	1420	1380	1600	1810	1772	2250	2350
Height	mm	2200	2540	2600	3140	3270	3155	3300	3300
Minimum Turning Radius	mm	2800	5000	3400	4800	5850	7000	7000	7000
Drum Width	mm	900	1300	1300	1450	1660	1660	2100	2100
Wheelbase	mm	1470	1948	2055	2895	3450	3600	3717	3717
Gradeability	%	30	30	35	33	30	30	40	40
Ground Clearance	mm	240	220	220	360	360	325	324	324
Static Linear Force	N/cm	55	154	154	300	300	324	286	333
Vibration Amplitude (High)	mm	0.6	0.45	0.7	0.71	0.83	0.8	0.8	0.8
Vibration Amplitude (Low)	mm	0.6	0.45	0.3	0.35	0.4	0.3	0.4	0.4
Vibration Frequency (High)	Hz	65	57	57	48	47	67	46	46
Vibration Frequency (Low)	Hz	65	57	52	32	30	50	40	40
Centrifugal Force (High)	kN	30	30	50	84	123	130	160x2	160x2
Centrifugal Force (Low)	kN	30	30	30	19	25	90	90x2	90x2
ENGINE									
Model		PERKINS 403D-11	KUBOTA D1703	KUBOTA D1703	CUMMINS 4BT3.9	CUMMINS 6BT5.9	CUMMINS QSB4.5-C160	CUMMINS 6BT5.9	CUMMINS 6BT5.9
Rated Power	HP	25	35	35	102	125	160	150	150
Rated Speed	rpm	2800	2400	2400	2400	2400	2200	2300	2300
FLUID CAPACITY									
Fuel (diesel)	L	20	80	90	180	200	200	154	154
Hydraulic	L	60	80	90	140	160	160	65	65
DRIVE SYSTEM									
Front / Rear Wheel Drum	Hydraulic Vibration								
TRANSMISSION SYSTEM									
Max. Travel Speed	km/h	8	9	10	8.4	9.7	12	12	12
HYDRAULIC SYSTEM									
Drive Pump / Motor	HANSA (Italy)	SAUER DANFOSS (USA)	SAUER DANFOSS (USA)	SAUER DANFOSS (USA)	SAUER DANFOSS (USA)	SAUER DANFOSS (USA)	SAUER DANFOSS (USA)	SAUER DANFOSS (USA)	SAUER DANFOSS (USA)
Vibrating Pump / Motor	SAUER DANFOSS (USA)	PERMCO (USA)	PERMCO / PARKER (USA)	SAUER DANFOSS (USA)	SAUER DANFOSS (USA)	SAUER DANFOSS (USA)	SAUER DANFOSS (USA)	SAUER DANFOSS (USA)	SAUER DANFOSS (USA)
STEERING SYSTEM									
Type	Hydraulic Power Steering, Easy to operate control, Primarily used for the compaction of road bituminous course, sand gravel mixtures and RCC material								



POWERPAC
POWERPAC INTERNATIONAL INC., USA



POWERPAC[®]
POWERPAC INTERNATIONAL INC., USA



PNEUMATIC TIRE ROLLER



PNEUMATIC TIRE ROLLER

TECHNICAL SPECIFICATIONS

MODEL		CPT238H-III	CPT238M-III	CPT248M-III	CPT268H-III	CPT268M-III	CPT288H-III	CPT288M-III
Operating Weight (Without Ballast)	kg	10000	10000	10800	18000	14500	20000	20000
Operating Weight (With Ballast)	kg	16000	16000	20000	26000	26000	30000	30000
Length	mm	4780	4780	4620	4950	4906	4950	4950
Width	mm	2100	2100	2260	2750	2800	2750	2750
Height	mm	3200	3200	3335	3240	3430	3240	3240
Minimum Turning Radius	mm	7500	7500	7800	8000	9000	8000	8000
Compaction Width	mm	2280	2280	2260	2790	2750	2790	2790
Wheelbase	mm	3700	3700	3550	3800	3836	3800	3800
Gradeability	%	30	20	20	30	20	30	30
ENGINE								
Model		CUMMINS 4BT3.9	CUMMINS 4BT3.9	CUMMINS 6BT5.9-C135	CUMMINS 6BTA5.9	CUMMINS 6BTA5.9	CUMMINS 6BTA5.9	CUMMINS 6BTA5.9
Rated Power	HP	102	102	135	170	135	170	170
Rated Speed	rpm	2400	2400	2200	2300	2000	2300	2300
OIL CAPACITY								
Fuel (diesel)	L	223	223	200	193	200	193	193
Engine Oil	L	18	18	15	22	15	22	22
TRANSMISSION SYSTEM								
Type		Hydraulic	Gearbox	Gearbox	Hydraulic	Gearbox	Hydraulic	Gearbox
Maximum Travelling Speed	km/h	14	14.7	16.5	10	15.5	10	20.64
TIRE								
Number of Front Tire		4	4	4	5	5	5	5
Number of Rear Tire		5	5	5	6	6	6	6
Tire Size		11.00-20						
Type		Typically utilized on asphalt concrete, cement, or lime stabilized soil, gravels, sand and clay mixtures.						
STEERING SYSTEM								
Type		Hydraulic Power Steering, low profiles and easy-to-operate control						



POWERPAC
POWERPAC INTERNATIONAL INC., USA



POWERPAC
POWERPAC INTERNATIONAL INC., USA



LANDFILL COMPACTOR



LANDFILL COMPACTOR

TECHNICAL SPECIFICATIONS

MODEL		PLC220	PLC250	PLC280	PLC300	PLC300H	PLC320H	PLC380H
Operating Weight	kg	20000	23050	26000	28050	28050	30000	33080
Length	mm	7355	7355	8150	8150	8090	8250	8250
Width	mm	3000	3000	3800	3800	3600	4000	4000
Height	mm	3600	3600	3810	3810	3685	3750	3750
Ground Clearance	mm	435	435	490	490	600	610	600
Rolling Width	mm	2910	2910	3430	3430	3600	3800	3800
Maximum Travel Speed	km/h	10	10	11	11	11.5	8	8
Wheelbase	mm	3350	3350	3500	3500	3500	3500	3530
ENGINE								
Model		POWERPLUS PE6200TDI	POWERPLUS PE6200TDI	CAT 3308B(L)	CAT 3308B(L)	CUMMINS QSM11 <small>(Made in USA)</small>	CUMMINS QSM11 <small>(Made in USA)</small>	CUMMINS QSM11 <small>(Made in USA)</small>
Rated Power	HP	200	200	255	255	340	340	340
COMPACTION WHEEL								
Wheel Width	mm	1040/835	1040/835	1195/970	1195/970	1120/1120	1350/1130	1350/1130
Wheel Diameter (Front/Rear)	mm	1500/1500	1500/1500	1620/1620	1620/1620	1620/1620	1620/1620	1620/1620
No. of Teeth per Wheel (Front/Rear)		50/40	50/40	50/40	50/40	50/40	60/50	60/50
DOZER BLADE								
Height	mm	1650	1650	1880	1880	1930	1980	1980
Weight	mm	3000	3000	3800	3800	3600	4000	4000
BRAKES								
Service Brake	Air-over-oil caliper disk brakes					Hydrostatic		
Parking Brake	Mechanical, Expanding hoofed brake steering					Hydraulic-applied spring released (SAHR)		
STEERING								
Steering Method	Hydraulic central articulation							
Steering Angle (grad)		40	40	40	40	40	40	40
Oscillating Angle (grad)		15	15	15	15	15	15	15
Track Radius, Inner (mm)	mm	6150	6150	7200	7200	6750	6750	6750



POWERPAC
POWERPAC INTERNATIONAL INC., USA



ASPHALT FINISHER



ASPHALT FINISHER

TECHNICAL SPECIFICATIONS

MODEL		PAF450T	PAF450W	PAF600T	PAF600W	PAF700T	PAF900T
Minimum Width of Paving	mm	2500	2500	2500	2800	3000	3000
Maximum Width of Paving	mm	4500	4500	6000	6000	7000	9000
Minimum Thickness of Paving	mm	10	10	10	10	20	20
Maximum Thickness of Paving	mm	250	250	250	250	300	300
Paving Speed	m/min	2.03~6.07	3.01~8.97	2.03~6.07	3.07~9.16	2.00~3.60	2.00~6.25
Hopper Capacity	T	10	10	10	12	12	12
Maximum Theoretical Output	T/H	220	220	220	300	400	500
Length	mm	5820	5850	5820	6394	6565	6240
Width	mm	4534	3000	6034	3000	3210	3270
Height	mm	2995	3100	2995	3695	3050	3050

ENGINE

Model		FUJI FE75TDI	FUJI FE75TDI	FUJI FE75TDI	DEUTZ F6L913	DEUTZ F6L913	DEUTZ BF6L913
Rated Power	HP	75	75	75	117	117	152
Rated Speed	rpm	2000	2000	2000	2300	2300	2300

WORKING DEVICES

Type	Hydraulic Extended Screenshot	Hydraulic Extended Screenshot	Hydraulic Extended Screenshot	Mechanical Extended Screenshot	Double Hydraulic Extended Screenshot	Mechanical Extended Screenshot

TRAVELLING

Drive Type		Mechanical					
Travelling Speed	km/h	1.55~4.62	2.29-16.74	1.55~4.62	2.30~16.84	0.90~2.86	0.96~2.86
Type		Crawler	Wheel	Crawler	Wheel	Crawler	Crawler

MODEL		PAF650WH	PAF750TH	PAF900TH	PAF1250TH
Minimum Width of Paving	mm	2500	3000	3000	3000
Maximum Width of Paving	mm	6000	7500	9000	12500
Minimum Thickness of Paving	mm	10	20	20	20
Maximum Thickness of Paving	mm	250	320	320	320
Paving Speed	m/min	0-18	0-25	0-25	0-15
Hopper Capacity	T	14	14	14	14
Maximum Theoretical Output	T/H	600	600	700	800
Length	mm	6766	6610	6610	6610
Width	mm	2592	3100	3100	3182
Height	mm	3745	4030	4030	4030

ENGINE

Model		CUMMINS 6BTAA5.9-C170	POWERPLUS PE6190TDI	POWERPLUS PE6190TDI	VOLVO TAD720VE (Made in Sweden)
Rated Power	HP	173	190	190	236
Rated Speed	rpm	2200	2300	2300	2300

WORKING DEVICES

Type	Hydraulic Extension Screenshot	Mechanical Extended	Hydraulic Extension Screenshot	Mechanical Extended

TRAVELLING

Drive Type		Full Hydraulic			
Travelling Speed	km/h	0-18	0-3.6	0-3.6	0-2.65
Type		Wheel	Crawler	Crawler	Crawler



POWERPAC
POWERPAC INTERNATIONAL INC., USA



ASPHALT MILLING MACHINE



ASPHALT MILLING MACHINE

TECHNICAL SPECIFICATIONS

MODEL		PMM1000W	PMM1300W	PMM2000T	PMM2100T
Milling Width	mm	1000	1300	2000	2100
Milling Depth	mm	0-150	0-120	0-320	0-320
Milling Speed	m/min	0-28	0-28	0-83	0-25
Conveyer's Belt Width	mm	450	450	800	800
Maximum Discharge Height	mm	3500	3500	4900	4700
Minimum Turning Diameter	m	13.5	13.5	9.2	12.5
Overall Length	mm	10640	10640	15300	14355
Overall Width	mm	2430	2430	2500	2680
Overall Height	mm	3100	3100	3000	4120
Travel Type		Wheel	Wheel	Crawler	Crawler
ENGINE					
Model		POWERPLUS PE6190TDI	POWERPLUS PE6190TDI	CUMMINS QSX15 <small>(Made in USA)</small>	CUMMINS QSX15 <small>(Made in USA)</small>
Rated Power	HP	190	190	607	607
Rated Speed	rpm	2300	2300	2100	2100
POWER TRANSMISSION					
Driven Type		Hydraulic	Hydraulic	Hydraulic	Hydraulic
Travelling Speed	km/h	0-6.7	0-6.7	0-5	0-5
WORKING SYSTEM					
Hydraulic pump		REXROTH (Germany)	REXROTH (Germany)	SAUER-DANFOSS (USA)	REXROTH (Germany)
Reducer		REXROTH (Germany)	REXROTH (Germany)	SAUER-DANFOSS (USA)	REXROTH (Germany)
MAIN COMPONENTS					
Traveling Motor		SAI (Italy)	SAI (Italy)	REXROTH (Germany)	REXROTH (Germany)
Milling Cutter and Holders		KENNAMETAL (USA)	KENNAMETAL (USA)	KENNAMETAL (USA)	KENNAMETAL (USA)
Handle Lever		GESSMANN (German)	GESSMANN (German)	REXROTH (Germany)	GESSMANN (German)
Auto Leveling Device		Optional	Optional	MOBA (Germany)	MOBA (Germany)



POWERPAC
POWERPAC INTERNATIONAL INC., USA



MOTOR GRADER



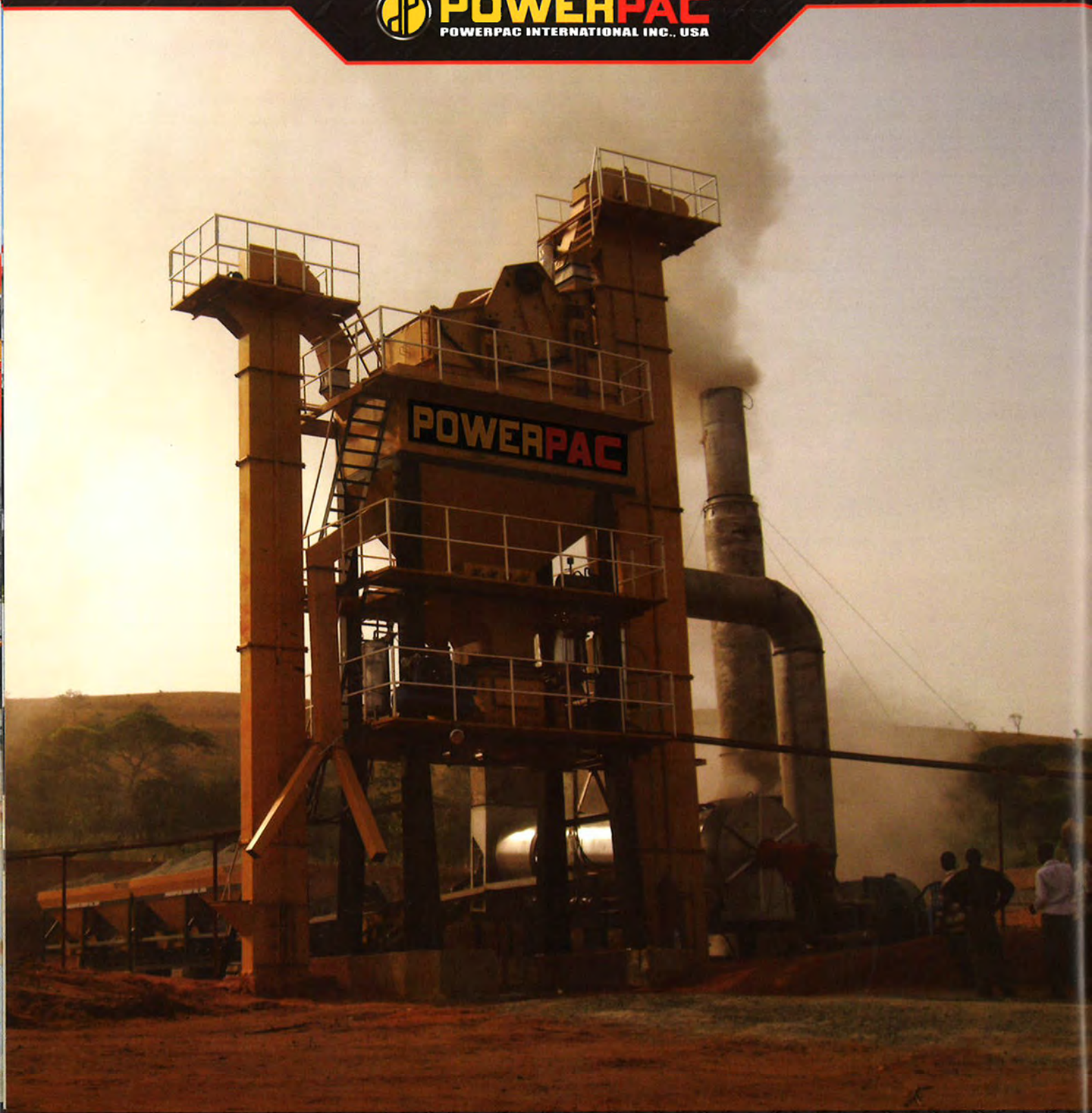
MOTOR GRADER

TECHNICAL SPECIFICATIONS

MODEL		PP120G-IX	PP12G-IX	PP14G-IX	PP16G-IX
Operating Weight	kg	12500	15000	16000	17000
Overall Dimension (LxWxH)	mm	8060 x 2600 x 3370	8630 x 2600 x 3370	9235 x 2600 x 3370	9235 x 2600 x 3370
Wheelbase	mm	5780	6100	6100	6100
Tread	mm	2120	2120	2120	2120
ENGINE					
Model		CUMMINS 6BT5.9-C130	POWERPLUS PE6170TDI CUMMINS 6BTA5.9-C180	CAT 3306B(L) CUMMINS 6CTAA8.3-C185 <small>(Made in USA)</small>	CAT 3306B(L)
Rated Power	HP	130	170 / 180	195 / 188	220
Rated Speed	rpm	2200	2200	2200	2200
Emission		Euro II			
TRANSMISSION					
Type		YD13, Power shift, single-shift lever, neutral shift lock device	ZF6WG180 (L) Hydro-Electrical control with single lever operation.	ZF6WG200 (Germany) Hydro- Electrical control with single lever operation	
FORWARD	Gear 1	km/h	6.9	6.5	6.9
	Gear 2	km/h	10.7	11.4	11.8
	Gear 3	km/h	17.3	14.6	15.5
	Gear 4	km/h	26.0	24.8	26.2
	Gear 5	km/h	37.8	30.0	32.6
	Gear 6	km/h	53.4	49.2	50.9
REVERSE	Gear 1	km/h	6.9	6.5	6.9
	Gear 2	km/h	17.3	14.6	15.5
	Gear 3	km/h	37.8	30.0	32.6
DRIVE					
Main Reducer		Spiral bevel gear, single stage			
Final Reducer		Single stage chain drive			
Tandem Drive		Double row roller chains			
STEERING SYSTEM					
Minimum Turning Radius	mm	6600	7300	7400	7400
Pivot Angle Frame	°	26	26	26	26
Maximum Turning Angle (Front Wheel)	°	49	49	49	49
AXLE					
Front		Ground Clearance 430mm Oscillating Angle 16°	Ground Clearance 610mm Oscillating Angle 16°	Ground Clearance 610mm Oscillating Angle 16°	Ground Clearance 430mm Oscillating Angle 16°
Rear		POWERPLUS (USA) Full Floating Rear Tandem Axle			
HYDRAULIC SYSTEM					
Hydraulic Lock		MTC Technology (Italy)			
Differential Lock		NO-SPIN (USA)			
Oil Motor		EATON (USA)			
Distributing Valve		HUSCO (USA)			
BLADE EQUIPMENT					
Blade Length x Height x Thickness	mm	3658 x 545 x 16	3658 x 545 x 16	4268 x 545 x 16	4320 x 545 x 16
Maximum Lifting Height	mm	410	450	450	450
Maximum Grading Depth	mm	560	535	535	535
Maximum Tilt Angle	°	90	90	90	90
Rotating Angle	°	360	360	360	360
Maximum Extending Length (Left/Right)	mm	2000	2000	2400	2425
BRAKE SYSTEM					
Service Brake		Full hydraulic and inner expanding	Hydraulic assisted and inner-expanding brake		
Parking Brake		Mechanical and inner-expanding brake type			
TIRES					
Size		17.5-25-20PR	17.5-25-20PR	17.5-25-20PR	17.5-25-20PR
CABIN					
Type		An ergonomically designed sound proof cabin, enabling wide operational view, comes standard with designer upholstery, adjustable POWERPLUS air suspension driver's seat, streamline dashboard, air con and radio/mp3 player for extensive operations with well deserved comfort.			
OPTIONAL ATTACHMENTS					
Scarifier		o	o	o	o
Ripper		o	o	o	o
Dozer		o	o	o	o
ROPS Cabin		o	o	o	o
MOBA (Germany) Averaging System		o	o	o	o

• Standard o Optional N.A Not Applicable





ASPHALT MIXING PLANT



ASPHALT MIXING PLANT

TECHNICAL SPECIFICATIONS

MODEL		PAP600S	PAP800S	PAP1000S	PAP1200S
Capacity	T/H	50	60	80	100
Aggregate	%	±0.5	±0.5	±0.5	±0.5
Filler	%	±0.25	±0.30	±0.30	±0.30
Asphalt	%	±0.25	±0.25	±0.25	±0.25
Type	Stationary				
COLD AGGREGATE FEEDING SYSTEM					
No. Aggregate Hoppers		4	4	4	4
Hopper Capacity	m ³	4.5	4.5	6	6
Belt Width	mm	500	500	500	500
DRYER SYSTEM					
Drum	m	Ø1.25x5.20	Ø1.50x6.40	Ø1.50x6.40	Ø1.50x6.40
Reducer Power	kW	5.5x2	5.5x4	5.5x4	7.5x4
Drying Drum Speed	rpm	11	11	11	11
HOT AGGREGATE ELEVATOR					
Total Power	kW	7.5	7.5	7.5	7.5
VIBRATING SCREEN SYSTEM					
No. of Deck		4	4	4	4
HOT AGGREGATE SILO					
Storage Bin		4	4	4	4
Total Volume	m ³	4.25	4.25	15	15
ASPHALT FEEDING SYSTEM					
Asphalt Tank Capacity	kW	40	40	40	40
Power	kW	9	9	9	9
WEIGHING SYSTEM					
Mineral	kg	1000	1000	1200	1300
Powder	kg	150	150	200	200
Asphalt	kg	100	100	100	100
Total Power	kW	5.5	5.5	5.5	5.5
MIXER SYSTEM					
Mixer Capacity	kg	600	800	1200	1200
Mixing Cycle	sec	45	45	45	45
ELECTRICAL CONTROL SYSTEM					
Control Mode	Automatic, Semi-Automatic, Manual				
OPTIONAL CONFIGURATION					
Model		PAP600M	PAP800M	PAP1000M	PAP1200M
Mobile		○	○	○	○

• Standard ○ Optional N.A Not Applicable





CONCRETE BATCHING PLANT



CONCRETE BATCHING PLANT

TECHNICAL SPECIFICATIONS

MODEL		PBP350S	PBP600S	PBP900S	PBP1200S	PBP1800S	PBP2500S
Capacity	m ³ /h	35	60	90	120	180	240
Aggregate Measuring Accuracy	%	±2	±2	±2	±2	±2	±2
Cement Measuring Accuracy	%	±1	±1	±1	±1	±1	±1
Fly Ash Measuring Accuracy	%	±1	±1	±1	±1	±1	±1
Water Measuring Accuracy	%	±1	±1	±1	±1	±1	±1
Additive Measuring Accuracy	%	±1	±1	±1	±1	±1	±1
Type		Stationary					
MAIN MIXER							
Capacity	m ³	0.75	1	1.5	2	3	4
Mixer Type							
BATCHING SYSTEM							
Aggregate Bin	m ³	7.3 x 3	8.38 x 4	10.2 x 4	15.6 x 4	30 x 4	2.5 x 4
Measuring Bin	m ³	1.339 x 1	1.03 x 4	0.9 x 4	2.0 x 4	2.65 x 4	5.12 x 4
WATER MEASURING SYSTEM							
Water Weighing Hopper	m ³	0.197	0.24	0.45	0.45	0.83	0.99
Weighing Sensor	kg	100	200	200	1000	1000	1500
Water Pump	kW	3	3	3	3	3	7.5
CEMENT MEASURING SYSTEM							
Cement Weighing Bin	m ³	0.452	0.672	1.22	1.22	1.59	2.02
Weighing Sensor	kg	300	500	500	500	1000	1000
FLY ASH MEASURING SYSTEM							
Measuring Bin	m ³	0.338	0.338	0.74	0.74	1.26	1.6
Weighing Sensor	kg	200	200	300	500	500	500
ADDITIVE MEASURING SYSTEM							
Additive Measuring Bin	m ³	0.05	0.05	0.05	0.05	0.095	0.09
Weighing Sensor	kg	50	100	100	100	100	200
Additive Pump	kw	2.2	2.2	3	3	3	2.2
PNEUMATIC SYSTEM							
Air Compressor	kw	5.5	7.5	7.5	7.5	11	11x2
Air Storage Tank	m ³	0	0.2 x 2	0.36 x 2	0.36 x 2	0.36 x 2	1 x 2
OPTIONAL CONFIGURATION							
Model		PBP350M	PBP600M	PBP900M	PBP1200M	N.A	N.A
Mobile		○	○	○	○	N.A	N.A

● Standard ○ Optional N.A Not Applicable



STONE CRUSHING PLANT



STONE CRUSHING PLANT

TECHNICAL SPECIFICATIONS

MODEL		PCP500S	PCP1000S	PCP1500S	PCP2500S	PCP5000S
Capacity	T/H	50	100	150	250	500
Output Size	mm	0-5, 5-10, 10-20	0-5, 5-10, 10-20	0-5, 5-10, 10-20	0-5, 5-10, 10-20	0-5, 5-10, 10-20
Type	Stationary					
VIBRATING FEEDER						
Maximum Feed Size	mm	450	500	580	600	800
Funnel Size	mm	3000x900	3800x960	4900x1100	6000x1300	6000x1500
Capacity	T/H	80-140	100-160	120-280	400-560	460-575
Motor Power	kW	6	11	15	22	30
Weight	T	3	4.3	5.5	7.5	8.7
Overall Dimension	mm	3260 x 1400 x 850	3882 x 1700 x 1350	4957 x 1850 x 1350	6082 x 2000 x 1450	6082 x 2200 x 2099
JAW CRUSHER						
Maximum Feed Size	mm	500 x 750	500	1050 x 750	1200 x 900	1020
Discharge Opening Range	mm	50-100	65-160	100-200	100-225	150-350
Capacity	T/H	45-100	50-120	180-294	210-350	300-800
Eccentric Shaft Speed	r/min	275	250	230	230	180
Electric Power	kW	55	55	110	132	220
CONE CRUSHER						
Maximum Feed Size	mm	160	200	215	235	350
Discharge Opening Width	mm	6-13	10-38	19-51	22-64	10-22
Capacity	T/H	50-235	88-390	200-440	260-580	330-725
Power	kW	110	185	220	250	280
Weight	T	10.8	22.3	26.3	36.5	44.3
IMPACT CRUSHER						
Opening Size	mm	1090 x 465	1532 x 560	1440 x 465	1532 x 560	1240 x 2000
Maximum Feed Size	mm	350	500	350	500	500
Capacity	T/H	80-130	140-200	100-160	140-200	300-500
Electrical Power	kW	110	200	200	200	280 x 2
Weight	T	14	19.3	18	19.3	50
Overall Dimension	mm	2638 x 2037 x 2713	2840 x 2748 x 2556	2580 x 2400 x 2810	2840 x 2748 x 2556	4000 x 3750 x 3950
VIBRATING SCREEN						
No. Screen Deck		3	3	3	3	3
Screen Size	mm	1500 x 4800	1800 x 5400	2100 x 6000	2400 x 6000	3000 x 7000
Capacity	T	50-200	50-300	100-380	160-450	150-650
Motor Power	kW	15	22	30	30	30x2
Weight	T	6.87	8.29	10.2	12.35	17
OPTIONAL CONFIGURATION						
Model		PCP500M	PCP1000M	PCP1500M	PCP2500M	N.A
Mobile		o	o	o	o	N.A

• Standard o Optional N.A Not Applicable



POWERPLUS
POWERPLUS GROUP INC., USA



WHEEL LOADER



WHEEL LOADER

TECHNICAL SPECIFICATIONS

MODEL		PP918T-V	PP928T-V	PP938T-V	PP948T-V	PP950T-V	
Operating Weight	kg	5500	6100	10800	12500	13300	
Rated Load	kg	1800	2200	3500	3800	4000	
Bucket Heaped Capacity	m ³	1.0	1.0 / 1.2 / 1.5	1.5 / 2.0 / 2.5	1.7 / 2.2 / 2.6	2.0 / 2.5 / 3.0	
Overall Dimension (LxWxH)	mm	5755 x 1960 x 2850	5880 x 2060 x 2820	7020 x 2510 x 3300	7135 x 2680 x 3370	7670 x 2680 x 3375	
Wheelbase	mm	2150	2350	2850	2850	3067	
ENGINE							
Model		CUMMINS 4BTA3.9-C80	POWERPLUS PE80DI CUMMINS 4BTA3.9-C100	DEUTZ WP6G125 CUMMINS 6BT5.9-C130 ISUZU 6BG1TLK	DEUTZ WP6G175 CUMMINS 6BT5.9-C150 ISUZU 6BG1T	DEUTZ WP6G175 CUMMINS 6BTA5.9-C180 ISUZU 6BG1T	
Rated Power	HP	80	80 / 100	125 / 130 / 130	175 / 150 / 160	175 / 180 / 160	
Rated Speed	rpm	2000	2000	2200	2200	2100	
Emission		Euro II					
TRANSMISSION							
Type		Mechanical control fixed shaft power shift gearbox		YD13 Electronic control gearbox		4WG180(L) Electronic control gearbox	
FORWARD	Gear 1	km/h	10	10	8	8	6.5
	Gear 2	km/h	27	27	12	12	10.2
	Gear 3	km/h	—	—	23	23	22
	Gear 4	km/h	—	—	36	36	36
REVERSE	Gear 1	km/h	10	10	10	10	6.5
	Gear 2	km/h	27	27	12	12	10.2
	Gear 3	km/h	—	—	25	25	22
	Gear 4	km/h	—	—	—	—	—
Gear Shift		2 Forward, 2 Reverse	2 Forward, 2 Reverse	4 Forward, 3 Reverse	4 Forward, 3 Reverse	4 Forward, 3 Reverse	
STEERING SYSTEM							
Type		Articulated frame, Load sensing fully hydraulic steering					
Minimum Turning Radius	mm	4600	5220	6328	6328	6720	
AXLES							
Gradeability	°	28	30	28	30	30	
Wheel Tread	mm	1480	1500	1800	1865	1865	
Ground Clearance	mm	326	330	369	369	439	
Main Reducer Type	Two grade reduction system. Spiral bevel gear type main reducer and planetary reducer for wheel hub, high efficiency and low noise. Disc caliper to ensure high brake torque and reliability						
HYDRAULIC SYSTEM							
Rated Pressure	MPa	16	16	17	18	18	
Lifting Time	sec	4.5 ± 0.2	4.5 ± 0.2	5.5 ± 0.2	5.5 ± 0.2	5.5 ± 0.2	
Total Time	sec	8.5 ± 0.5	8.5 ± 0.5	9.8 ± 0.5	10 ± 0.5	9 ± 0.5	
WORKING EQUIPMENT							
Maximum Breaking Force	kN	46	60	103	120	140	
Dumping Height	mm	2750	2750	3000	3060	3060	
Dumping Reach	mm	910	920	1056	1056	1095	
BRAKE SYSTEM							
Service Brake	Air over hydraulic disc brake on 4 wheels						
Parking Brake	Flexible shaft control expand hoof type			Air break control band brake			
TIRES							
Size	16/20-20-16PR	16/70-20-16PR	17.5-25-20PR	20.5-25-20PR	20.5-25-20PR		
CABIN							
Type	An ergonomically designed sound proof cabin, enabling wide operational view, comes standard with designer upholstery, adjustable POWERPLUS air suspension driver's seat, streamline dashboard, air con and radio/mp3 player for extensive operations with well deserved comfort.						
OPTIONAL ATTACHMENT							
Pilot Control	•	•	•	•	•	•	
Cabin	•	•	•	•	•	•	
ROPS/FOPS Cabin	○	○	○	○	○	○	
Quick Coupler	○	○	○	○	○	○	
Rock Bucket	N.A	○	○	○	○	○	
Pallet Fork	○	○	○	○	○	○	
Log Grapple	○	○	○	○	○	○	
Side Dump Bucket	○	○	○	○	○	○	
Wet Brake Axle	N.A	N.A	○	○	○	○	
Euro III Engine	○	○	○	○	○	○	

• Standard ○ Optional N.A Not Applicable



POWERPLUS
POWERPLUS GROUP INC., USA



POWERPLUS
POWERPLUS GROUP INC., USA

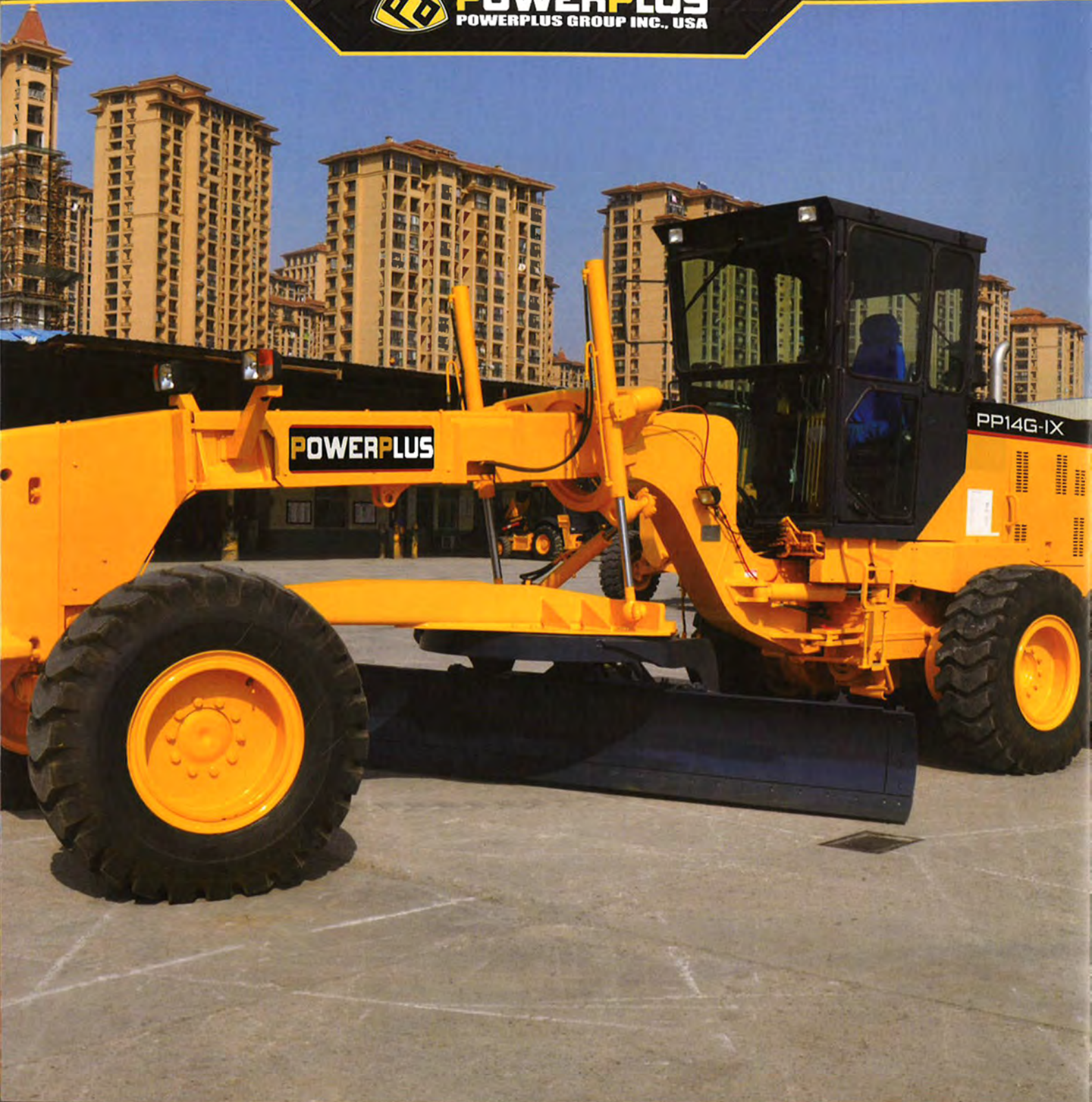


WHEEL LOADER





POWERPLUS
POWERPLUS GROUP INC., USA



MOTOR GRADER



MOTOR GRADER

TECHNICAL SPECIFICATIONS

MODEL		PP120G-IX	PP12G-IX	PP14G-IX	PP16G-IX
Operating Weight	kg	12500	15000	16000	17000
Overall Dimension (LxWxH)	mm	8060 x 2600 x 3370	8630 x 2600 x 3370	9235 x 2600 x 3370	9235 x 2600 x 3370
Wheelbase	mm	5780	6100	6100	6100
Tread	mm	2120	2120	2120	2120
ENGINE					
Model		CUMMINS 6BT5.9-C130	POWERPLUS PE6170TDI CUMMINS 6BTA5.9-C180	CAT 3306B(L) CUMMINS 6CTAA8.3-C185 <small>(Made in USA)</small>	CAT 3306B(L)
Rated Power	HP	130	170 / 180	195 / 188	220
Rated Speed	rpm	2200	2200	2200	2200
Emission	Euro II				
TRANSMISSION					
Type		YD13, Power shift, single-shift lever, neutral shift lock device	ZF6WG180 (L) Hydro-Electrical control with single lever operation.	ZF6WG200 (Germany) Hydro- Electrical control with single lever operation	
FORWARD	Gear 1	km/h	6.9	6.5	6.9
	Gear 2	km/h	10.7	11.4	11.8
	Gear 3	km/h	17.3	14.6	15.5
	Gear 4	km/h	26.0	24.8	26.2
	Gear 5	km/h	37.8	30.0	32.6
	Gear 6	km/h	53.4	49.2	50.9
REVERSE	Gear 1	km/h	6.9	6.5	6.9
	Gear 2	km/h	17.3	14.6	15.5
	Gear 3	km/h	37.8	30.0	32.6
DRIVE					
Main Reducer		Spiral bevel gear, single stage			
Final Reducer		Single stage chain drive			
Tandem Drive		Double row roller chains			
STEERING SYSTEM					
Minimum Turning Radius	mm	6600	7300	7400	7400
Pivot Angle Frame	°	26	26	26	26
Maximum Turning Angle (Front Wheel)	°	49	49	49	49
AXLE					
Front	Ground Clearance 430mm Oscillating Angle 16°		Ground Clearance 610mm Oscillating Angle 16°	Ground Clearance 610mm Oscillating Angle 16°	Ground Clearance 430mm Oscillating Angle 16°
Rear	POWERPLUS (USA) Full Floating Rear Tandem Axle				
HYDRAULIC SYSTEM					
Hydraulic Lock		MTC Technology (Italy)			
Differential Lock		NO-SPIN (USA)			
Oil Motor		EATON (USA)			
Distributing Valve		HUSCO (USA)			
BLADE EQUIPMENT					
Blade Length x Height x Thickness	mm	3658 x 545 x 16	3658 x 545 x 16	4268 x 545 x 16	4320 x 545 x 16
Maximum Lifting Height	mm	410	450	450	450
Maximum Grading Depth	mm	560	535	535	535
Maximum Tilt Angle	°	90	90	90	90
Rotating Angle	°	360	360	360	360
Maximum Extending Length (Left/Right)	mm	2000	2000	2400	2425
BRAKE SYSTEM					
Service Brake	Full hydraulic and inner expanding		Hydraulic assisted and inner-expanding brake		
Parking Brake	Mechanical and inner-expanding brake type				
TIRES					
Size	17.5-25-20PR		17.5-25-20PR	17.5-25-20PR	17.5-25-20PR
CABIN					
Type	An ergonomically designed sound proof cabin, enabling wide operational view, comes standard with designer upholstery, adjustable POWERPLUS air suspension driver's seat, streamline dashboard, air con and radio/mp3 player for extensive operations with well deserved comfort.				
OPTIONAL ATTACHMENTS					
Scarifier	○		○	○	○
Ripper	○		○	○	○
Dozer	○		○	○	○
ROPS Cabin	○		○	○	○
MOBA (Germany) Averaging System	○		○	○	○

● Standard ○ Optional N.A Not Applicable



POWERPLUS
POWERPLUS GROUP INC., USA



BULLDOZER



BULLDOZER

TECHNICAL SPECIFICATIONS

MODEL		D60EX-15	D63EX-15	D65EX-15	D6R	
Operating Weight	kg	10500	13800	20000	20000	
Overall Dimension (L x W x H)	mm	4190 x 2935 x 3020	4760 x 3135 x 3230	5416x3297x3250	5098 x 3320 x 3108	
Track Gauge	mm	1650	1860	1880	1880	
Minimum Ground Clearance	mm	368	368	352.5	445	
Maximum Gradeability	%	30	30	30	30	
ENGINE						
Model		CUMMINS 4BTA3.9-C110	CUMMINS 6BTA5.9-C125	CAT 3306B(L)	CAT 3306B(L)	
Rated Power	HP	110	125	165	178	
Rated Speed	rpm	2200	2000	1850	1850	
Emission	Euro II					
TRAVEL SPEED						
FORWARD	Gear 1	km/h	2.6	2.4	3.3	4.0
	Gear 2	km/h	3.9	3.5	6.3	6.9
	Gear 3	km/h	6.7	6.2	11.4	10.8
	Gear 4	km/h	10.4	10.6	-	-
REVERSE	Gear 1	km/h	3.7	3.8	4.0	4.8
	Gear 2	km/h	6.7	7	7.6	8.4
	Gear 3	km/h	-	-	13.9	12.9
TRANSMISSION						
Torque Converter Type		Mechanical power shift transmission		3 element, single stage, Single phase.	Hydraulic mechanical torque converter	
Transmission		Mechanical		3 element, single stage, single phase. Planetary gear, power shift	Planetary gear, power shift	
Steering Clutch		Multi-disc, dry type		Wet type, multi-disc, spring loaded, hydraulic-released.	Multiple-disc oil power metallurgy disc. Hydraulic operated.	
Steering brake		Floating brake		Wet type, band brake, operated with hydraulic booster.	Floating band brake	
Final Drive		A pair of external meshing gear		Spur gear, double reduction, splash lubricated.	Double reduction with spur gear and segment sprocket.	
HYDRAULIC SYSTEM						
Pump Type		Gear pump				
Maximum Pressure	MPa	16		15.5		
Discharge	L/min	80	97	97	167	
WORKING EQUIPMENT						
Blade Type		Straight tilt	Straight tilt	Straight tilt	Straight tilt	
Blade Length	mm	2935	3135	3297	3320	
Blade Height	mm	960	970	1160	1199	
Dozing Capacity	m ³	2.8	3.3	5.0	5.0	
Maximum Digging Depth	mm	350	400	420	592	
Maximum Lift Height of Blade	mm	830	894	894	980	
UNDERCARRIAGE						
Width of Track Shoes	mm	450	450	500	560	
Carrier Rollers (each side)		1	2	2	2	
Track Rollers (each side)		6	5	6	7	
Pitch	mm	171	171	203	203	
No. of Shoes (each side)		39	43	43	39	
LGP Track		o	o	o	o	
CABIN						
Type	An ergonomically designed sound proof cabin, enabling wide operational view, comes standard with designer upholstery, adjustable POWERPLUS air suspension driver's seat, streamline dashboard, air con and radio/mp3 player for extensive operations with well deserved comfort.					
OPTIONAL ATTACHMENT						
Multi-Shank Ripper		o	o	o	o	
Single-Shank Ripper		N.A	N.A	N.A	o	
Semi-U Blade		o	o	o	o	
U-Blade		o	o	o	o	
Angle Blade		o	o	o	o	
ROPS Cabin		o	o	o	o	
Cold Weather Kit		o	o	o	o	
Winch		o	o	o	o	

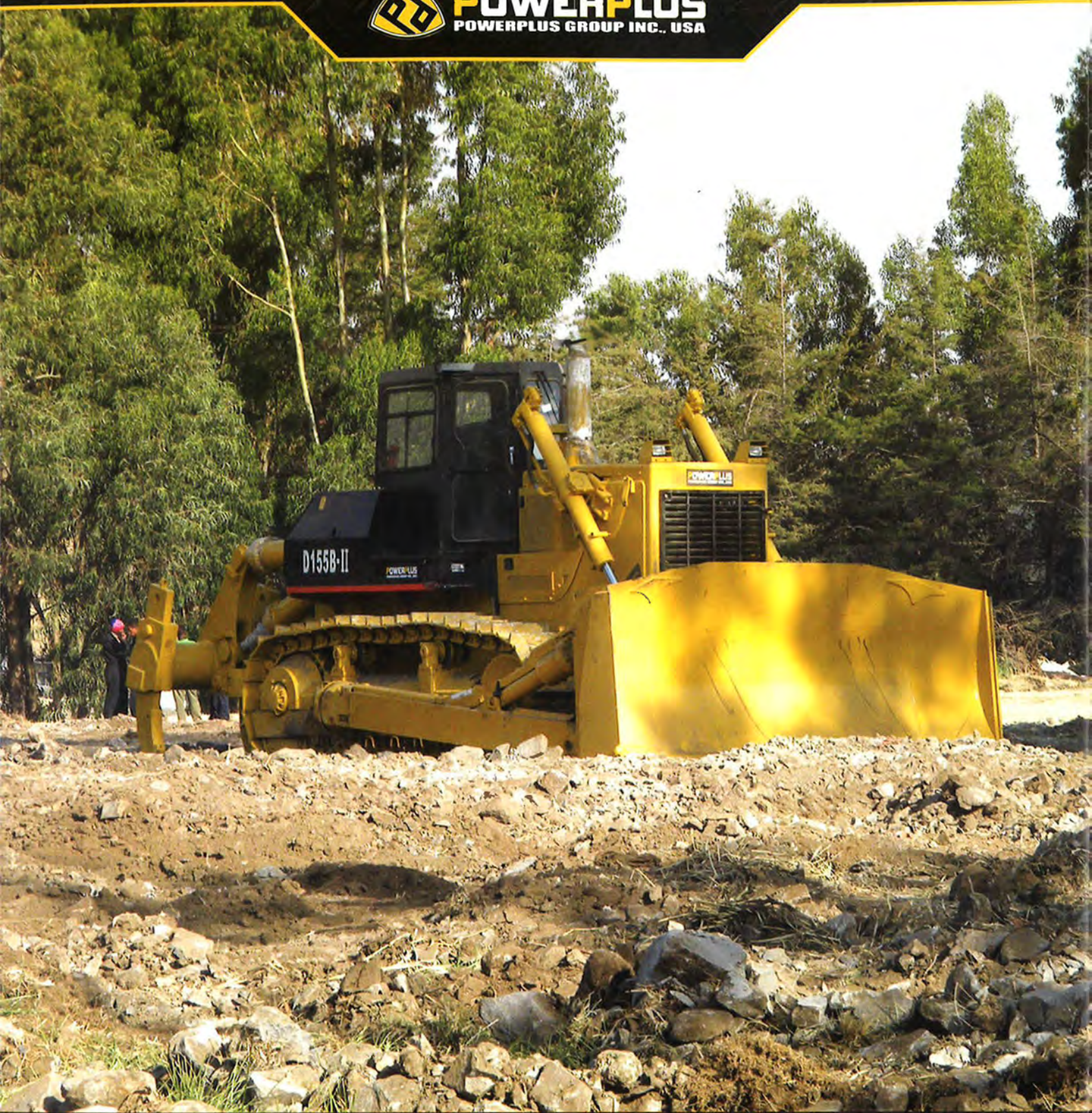
• Standard o Optional N.A Not Applicable



POWERPLUS
POWERPLUS GROUP INC., USA



POWERPLUS
POWERPLUS GROUP INC., USA



BULLDOZER



BULLDOZER

TECHNICAL SPECIFICATIONS

MODEL		D85EX-15	D155B-II	D368B-II	
Operating Weight	kg	30000	40000	51000	
Overall Dimension (L x W x H)	mm	4405 x 3725 x 3472	6580 x 4130 x 3696	7092 x 4314 x 3928	
Track Gauge	mm	2000	2140	2260	
Minimum Ground Clearance	mm	405	500	600	
Maximum Gradeability	%	30	30	30	
ENGINE					
Model		CUMMINS NT855-C280	CUMMINS NTA855-C360S10	CUMMINS KTA19-C525	
Rated Power	HP	245	355	420	
Rated Speed	rpm	2000	2000	2000	
Emission		Euro II			
TRAVEL SPEED					
FORWARD	Gear 1	km/h	3.8	3.6	3.4
	Gear 2	km/h	6.8	6.6	6.7
	Gear 3	km/h	11.3	11.5	12.2
REVERSE	Gear 1	km/h	4.9	4.4	4.2
	Gear 2	km/h	8.2	7.8	8
	Gear 3	km/h	13.6	13.5	14.8
TRANSMISSION					
Torque Converter Type		3 Element, Single Stage, Single phase.			
Transmission		Planetary gear, multiple-disc clutch, hydraulic-actuated	Planetary gear, multiple-disc clutch, hydraulic-actuated, forced lubrication by gear pump	Hand-operated hydraulic shift, planetary gear, multiple-disc clutch, hydraulic-actuated, forced lubrication by gear pump	
Steering Clutch		Wet. Multi-disc, spring compression, hydraulic disengaging	Wet, multiple-disc clutch, spring loaded, hydraulic released.	Wet type, multi disc, spring loaded, hydraulic released.	
Steering brake		Wet. Float type, direct clutching, hydraulic booster brake	Wet, band brake, operated with hydraulic booster	Wet type, band brake, operated with hydraulic booster.	
Final Drive		Spur gear, double reduction, splash lubricated.	Spur gear, double reduction, splash lubricated.	Spur gear, interplanetary gear, splash lubricated.	
HYDRAULIC SYSTEM					
Pump Type		Gear pump			
Maximum Pressure	MPa	14	13.7	20	
Discharge	L/min	320	335	264	
WORKING EQUIPMENT					
Blade Type		Straight tilt blade	Straight tilt blade	Semi-U blade	
Blade Length	mm	3725	4130	4314	
Blade Height	mm	1250	1590	1841	
Dozing Capacity	m ³	7.8	12	16	
Maximum Digging Depth	mm	560	560	749	
Maximum Lift Height of Blade	mm	1210	1560	1620	
UNDERCARRIAGE					
Width of Track Shoes	mm	560	560	610	
Carrier Rollers (each side)		2	2	2	
Track Rollers (each side)		7	7	7	
Pitch	mm	216	228.6	260.35	
No. of shoes (each side)		39	41	40	
LGP Track		o	N.A	N.A	
CABIN					
Type	An ergonomically designed sound proof cabin, enabling wide operational view, comes standard with designer upholstery, adjustable POWERPLUS air suspension driver's seat, streamline dashboard, air con and radio/mp3 player for extensive operations with well deserved comfort.				
OPTIONAL ATTACHMENT					
Multi-Shank Ripper		o	o	N.A	
Single-Shank Ripper		o	o	o	
Semi-U Blade		o	o	•	
U-Blade		o	o	o	
Angle Blade		o	o	o	
ROPS Cabin		o	o	o	
Cold Weather Kit		o	o	o	
Winch		o	o	o	

• Standard o Optional N.A Not Applicable



POWERPLUS
POWERPLUS GROUP INC., USA



POWERPLUS
POWERPLUS GROUP INC., USA



ELEVATED SPROCKET BULLDOZER



ELEVATED SPROCKET BULLDOZER

TECHNICAL SPECIFICATIONS

MODEL		D7S	D8S	D9S	
Operating Weight	kg	23800	37500	48880	
Overall Dimension (L x W x H)	mm	5677 x 3500 x 3402	7751 x 3940 x 3549	8478 x 4314 x 3970	
Track Gauge	mm	1980	2083	2250	
Minimum Ground Clearance	mm	404	556	517	
Maximum Gradeability	°	30	30	30	
ENGINE					
Model		CUMMINS NTA855-C280S10	CUMMINS NT855-C360S10	CUMMINS KTA19-C525S10	
Rated Power	HP	230	320	430	
Rated Speed	rpm	2100	2100	1800	
Emission		Euro II			
TRAVEL SPEED					
FORWARD	Gear 1	km/h	3.9	3.5	3.9
	Gear 2	km/h	6.5	6.2	6.7
	Gear 3	km/h	10.9	10.8	12.2
REVERSE	Gear 1	km/h	4.8	4.7	4.8
	Gear 2	km/h	8.2	8.1	8.5
	Gear 3	km/h	13.2	13.9	15.1
TRANSMISSION					
Torque Converter Type		Power separating hydraulic-mechanic			
Transmission		Planetary power shift transmission with three speeds forward and three speeds reverse			
Steering Clutch		Hydraulic pressed, usually separated clutch			
Braking Clutch		Pressed by spring, separated hydraulic, meshed type.			
Final Drive		Two-stage planetary reduction gear mechanism, splash lubrication.			
HYDRAULIC SYSTEM					
Pump Type		Gear pump	Gear pump	Double vane pump	
Maximum Pressure	MPa	8.6	22.5	18.3	
Discharge	L/min	194	220	358	
WORKING EQUIPMENT					
Blade Type		Straight tilt blade	Straight tilt blade	Straight tilt blade	
Blade Length	mm	3500	3940	4314	
Dozing Capacity	m ³	8.4	11.3	13.5	
Digging Depth	mm	498	582	614	
Maximum Lift Height of Blade	mm	1115	1231	1288	
UNDERCARRIAGE					
Type		Triangle track. Elevated sprocket, Elastic suspended.			
Width of Track Shoes	mm	560	560	610	
Carrier Rollers (each side)		1	1	1	
Track Rollers (each side)		7	8	8	
Pitch	mm	216	216	240	
LGP Track		o	N.A	N.A	
CABIN					
Type	An ergonomically designed sound proof cabin, enabling wide operational view, comes standard with designer upholstery, adjustable POWERPLUS air suspension driver's seat, streamline dashboard, air con and radio/mp3 player for extensive operations with well deserved comfort.				
OPTIONAL ATTACHMENT					
Multi-Shank Ripper		o	o	N.A	
Single-Shank Ripper		o	o	o	
Semi-U Blade		o	o	o	
U-Blade		o	N.A	N.A	
Angle Blade		N.A	N.A	N.A	
Environmental Blade		o	N.A	N.A	

• Standard o Optional N.A Not Applicable



POWERPLUS
POWERPLUS GROUP INC., USA



POWERPLUS
POWERPLUS GROUP INC., USA



MINI EXCAVATOR



MINI EXCAVATOR TECHNICAL SPECIFICATIONS

MODEL		PP35E-IX	PP40E-IX	PP60E-IX	PP80E-IX	PP20S-IX	PP40S-IX	PP60S-IX	
Operating Weight	kg	3080	3750	5750	8100	1880	3800	5710	
Rated Bucket Capacity	m ³	0.09	0.12	0.2	0.32	0.05	0.12	0.20	
Overall Dimension (LxWxH)	mm	4510 x 1450 x 2395	5250 x 1518 x 2470	6065 x 1900 x 2590	6425 x 2090 x 2610	3835 x 1060 x 2350	4650 x 1800 x 2550	5715 x 2000 x 2715	
Maximum Digging Force	kN	17.4	22.2	37.3	60	14.3	25.7	25.7	
Rotating Platform Speed	rpm	12	11.5	11.5	12	11	13	10.5	
Minimum Ground Clearance	mm	292	320	340	380	190	350	345	
Gradeability	%	60	60	60	60	60	60	60	
Type		Standard				Zero-Swing			
ENGINE									
Model		KUBOTA D1803 <small>(Made in Japan)</small>	KUBOTA V2403 <small>(Made in Japan)</small>	YANMAR 4TNV94L <small>(Made in Japan)</small>	KUBOTA V3800DI <small>(Made in Japan)</small>	PERKINS 403C-11 <small>(UK)</small>	KUBOTA V2403 <small>(Made in Japan)</small>	YANMAR 4TNV94L <small>(Made in Japan)</small>	
Rated Power	HP	31	42	50	83	20	42	50	
Rated Speed	rpm	2200	2200	2100	2200	2200	2200	2100	
Emission		Euro III				Euro II	Euro III		
HYDRAULIC SYSTEM									
Main Pump		KYB <small>(Made in Japan)</small>	NACHI <small>(Made in Japan)</small>	NACHI <small>(Made in Japan)</small>	KPM <small>(Made in Japan)</small>	NACHI <small>(Made in Japan)</small>	KYB <small>(Made in Japan)</small>	NACHI <small>(Made in Japan)</small>	
Hydraulic Flow	L/min	76.3	107.1	121	169.9	52.1	107.2	121	
Auxiliary Flow	L/min	26.6	44.0	50.0	80.0	33.0	44.0	50.0	
WORKING RANGE									
Maximum Digging Radius	mm	4610	5625	6380	6595	4050	5460	6360	
Maximum Digging Height	mm	4205	5195	5700	6965	3360	5100	5940	
Maximum Digging Depth	mm	2610	3565	3935	4125	2105	3120	3790	
Maximum Dumping Height	mm	2840	3615	3855	5135	2330	3630	4050	
Maximum Height Digging Radius	mm	2957	3265	4127	3298	2948	2948	6370	
Maximum Dozing Depth	mm	372	460	397	420	110	450	460	
Maximum Dozing Height	mm	262	210	251	320	180	389	350	
Maximum Tail Turning Radius	mm	1346	1510	1670	1865	700	900	1000	
UNDERCARRIAGE									
Track Length	mm	1935	2100	2455	2784	1628	2100	2600	
Track Ground Length	mm	1454.5	1620	1910	2200	1261	1620	2060	
Track Gauge	mm	1934	2100	2458	2784	1624	2096	2605	
Traction Speed (high / low)	km/h	4.2/2.4	4.3/2.4	4.25/2.66	4.5/2.6	3/1.7	4.3/2.4	4.7/2.8	
Ground Pressure	kPa	30	35	34	41.6	27	31	31.6	
Track Roller		2	2	2	2	2	2	2	
Carrier Roller		3	4	6	6	4	3	6	
CABIN									
Type		An ergonomically designed sound proof cabin, enabling wide operational view, comes standard with designer upholstery, adjustable POWERPLUS air suspension driver's seat, streamline dashboard, air con and radio/mp3 player for extensive operations with well deserved comfort.							
DOZER BLADE									
Width	mm	1470	1520	1865	2090	1400	1520	1865	
Height	mm	296	296	376	428	229	296	376	
TRACTION SYSTEM									
Type		Rubber / Steel	Rubber / Steel	Rubber / Steel	Rubber / Steel	Rubber	Rubber / Steel	Rubber / Steel	
Track Width	mm	300	300	400	450	230	300	400	
OPTIONAL ATTACHMENT									
Hydraulic Piping		•	•	•	•	•	•	•	
Quick Coupler		○	○	○	○	○	○	○	
Hydraulic Breaker		○	○	○	○	○	○	○	

• Standard ○ Optional N.A Not Applicable



POWERPLUS
POWERPLUS GROUP INC., USA



POWERPLUS
POWERPLUS GROUP INC., USA



EXCAVATOR



EXCAVATOR

TECHNICAL SPECIFICATIONS

MODEL		PP160E-XI	PP180E-XI	PP220E-XI	PP250E-XI	PP280E-XI
Operating Weight	kg	13300	16500	21500	23500	24500
Rated Bucket Capacity	m ³	0.55	0.70	1.0	1.2	1.3
Overall Dimension (LxWxH)	mm	7580 x 2490 x 2815	7690 x 2600 x 2960	9390 x 2780 x 3120	9390 x 2780 x 3120	9740 x 2980 x 3190
Boom Length	mm	4600	4600	5700	5700	5850
Arm Length	mm	2500	2500	2900	2900	3050
Minimum Ground Clearance	mm	433	468	468	468	442
Maximum Digging Force	kN	90	90	145	145	159
Swing Speed	rpm	12.5	12.1	11.7	11.7	11.1
Maximum Gradeability	%	70	70	70	70	70
ENGINE						
Model		CUMMINS B3.9-C (Made in USA)	CUMMINS B3.9-C (Made in USA)	CUMMINS B5.9-C (Made in USA) / ISUZU 6BG1 (Made in Japan)	CUMMINS B5.9-C (Made in USA)	CUMMINS B5.9-C (Made in USA)
Rated Power	HP	116	116	180 / 155	180	180
Rated Speed	rpm	2200	2200	2000 / 2100	2000	2000
Emission	Euro II					
HYDRAULIC SYSTEM						
Main Pump		Kawasaki (Made in Japan)				
Swing Pump		Kawasaki (Made in Japan)				
Main Valve		Kawasaki (Made in Japan)				
Max. Flow	L/min	128x2	128x2	200x2	200x2	226 x 2
Working Pressure	MPa	34.3	34.3	34.3	34.3	34.3
Hydraulic Oil Tank Capacity	L	130	130	246	246	246
Travel Motor	Doosan (Made in Korea)		Nabtesco / Kayaba (Made In Japan)			
WORKING RANGE						
Maximum Digging Reach	mm	8305	8305	9865	9865	10170
Maximum Digging Height	mm	8630	8770	9275	9275	9310
Maximum Digging Depth	mm	5500	5360	6515	6515	6875
Maximum Vertical Digging Depth	mm	4940	4750	5915	5915	5860
Maximum Dumping Height	mm	6180	6320	6560	6560	6440
Minimum Swing Radius	mm	2495	2495	3630	3630	3975
Rear Swing Radius	mm	2155	2205	2720	2720	2810
UNDERCARRIAGE						
Track Length	mm	3486	3985	4260	4260	4450
Track Ground Length	mm	2750	3170	3445	3445	3640
Track Shoe Width	mm	500	500	600	600	600
Track Gauge	mm	1960	2000	2180	2180	2380
Travel Speed (high/low)	km/h	5.3/3.1	4.6/2.4	5.2/3.5	5.2/3.5	5.2/3.5
Ground Pressure	kPa	38	45.6	46.5	46.5	48.6
Track Rollers		7	7	8	8	9
Carrier Rollers		2	2	2	2	2
CABIN						
Type	An ergonomically designed sound proof cabin, enabling wide operational view, comes standard with designer upholstery, adjustable POWERPLUS air suspension driver's seat, streamline dashboard, air con and radio/mp3 player for extensive operations with well deserved comfort.					
OPTIONAL ATTACHMENT						
Hydraulic Piping		o	o	o	o	o
Quick Coupler		o	o	o	o	o
Hydraulic Breaker		o	o	o	o	o
Rock Bucket		N.A	N.A	o	o	o
Bucket Crusher		o	o	o	o	o
ROPS / FOPS Cabin		o	o	o	o	o
Long Arm		o	N.A	o	o	o
Magnet		N.A	N.A	o	N.A	o
Rear View Camera		o	o	o	o	o
Wide Track		o	o	o	o	o
Long Carriage (LC)		N.A	N.A	o	N.A	N.A
Explosion-proof Valve		o	o	o	o	o

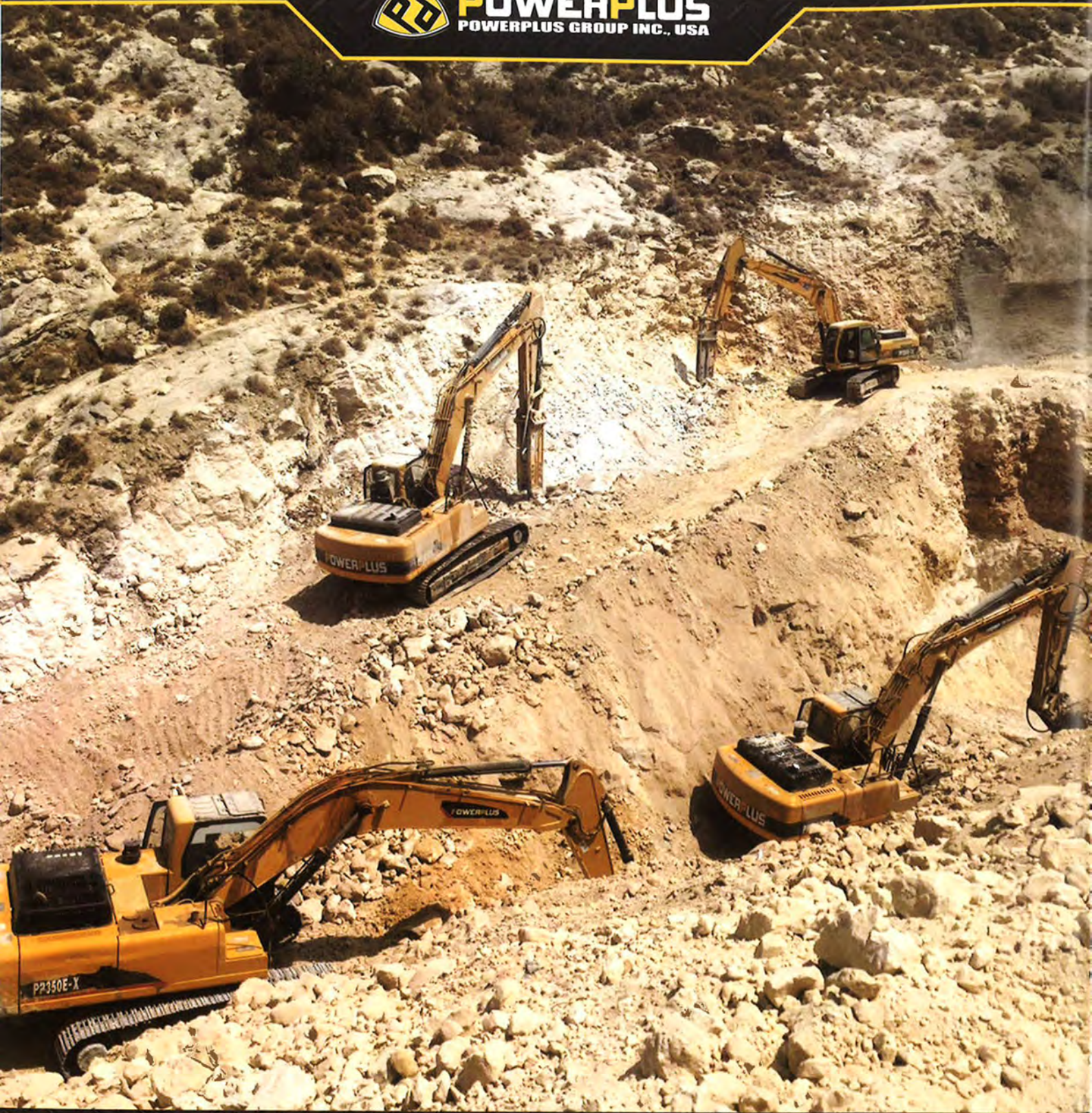
• Standard o Optional N.A Not Applicable



POWERPLUS
POWERPLUS GROUP INC., USA



POWERPLUS
POWERPLUS GROUP INC., USA



EXCAVATOR



EXCAVATOR

TECHNICAL SPECIFICATIONS

MODEL		PP300E-XII	PP350E-XI	PP380E-XI	PP500E-XI	PP800E-XI
Operating Weight	kg	27500	33500	36500	46800	71200
Rated Bucket Capacity	m ³	1.4	1.5	1.8	2.3	4.0
Overall Dimension (LxWxH)	mm	9840 x 3190 x 3325	11080 x 3190 x 3280	11080 x 3190 x 3280	12180 x 3340 x 3280	12170 x 4256 x 5050
Boom Length	mm	5850	6470	6470	7060	6600
Arm Length	mm	3050	3185	3185	3380	3020
Minimum Ground Clearance	mm	520	498	498	722	898
Maximum Digging Force	kN	159	227	245	276	365
Swing Speed	rpm	10.5	10.6	8.5	8.6	7.2
Maximum Gradeability	%	70	70	70	70	70
ENGINE						
Model		CUMMINS B5.9-C (Made in USA)	CUMMINS 6C8.3 (Made in USA) / ISUZU 6HK1XQP (Made in Japan)	CUMMINS 6C8.3 (Made in USA)	CUMMINS QSM11 (Made in USA)	CUMMINS QSX15 (Made in USA)
Rated Power	HP	180	270 / 250	270	345	481HP
Rated Speed	rpm	2000	2000	2000	1800	1800
Emission		Euro II				
HYDRAULIC SYSTEM						
Main Pump		Kawasaki (Made in Japan)				
Swing Pump		Kawasaki (Made in Japan)				
Main Valve		Kawasaki (Made in Japan)				
Max. Flow	L/min	226 x 2	265x2	300x2	360x2	450x2
Working Pressure	MPa	34.3	34.3	37	34.3	34.3
Hydraulic Oil Tank Capacity	L	246	310	310	335	660
Travel Motor		Nabtesco / Kayaba (Made in Japan)				O & K
WORKING RANGE						
Maximum Digging Reach	mm	10170	11100	11100	12025	11750
Maximum Digging Height	mm	9370	10200	10200	10910	11165
Maximum Digging Depth	mm	6810	7370	7370	7810	7190
Maximum Vertical Digging Depth	mm	5800	6380	6380	6800	6800
Maximum Dumping Height	mm	6500	7135	7135	7550	7040
Minimum Swing Radius	mm	3975	4265	4265	4825	5200
Rear Swing Radius	mm	2910	3420	3420	3845	4000
UNDERCARRIAGE						
Track Length	mm	4625	4622	4622	5390	5957
Track Ground Length	mm	3715	3700	3700	4360	4720
Track Shoe Width	mm	600	600	600	600	650
Track Gauge	mm	2590	2590	2590	2740	3350
Travel Speed (high/low)	km/h	4.1/2.5	5.2/3.3	4.6/2.6	4.8/3.0	4.8/3.0
Ground Pressure	kPa	56	65.3	70.8	79.2	100
Track Rollers		7	8	8	9	8
Carrier Rollers		4	2	2	2	3
CABIN						
Type		An ergonomically designed sound proof cabin, enabling wide operational view, comes standard with designer upholstery, adjustable POWERPLUS air suspension driver's seat, streamline dashboard, air con and radio/mp3 player for extensive operations with well deserved comfort.				
OPTIONAL ATTACHMENT						
Hydraulic Piping		○	○	○	○	○
Quick Coupler		○	○	○	○	N.A
Hydraulic Breaker		○	○	○	○	○
Rock Bucket		○	○	●	●	●
Bucket Crusher		○	○	○	○	○
ROPS / FOPS Cabin		○	○	○	○	●
Long Arm		○	○	○	○	N.A
Magnet		N.A	N.A	N.A	N.A	N.A
Rear View Camera		○	○	○	○	○
Wide Track		○	○	○	N.A	N.A
Long Carriage (LC)		N.A	N.A	○	●	N.A
Explosion-proof Valve		○	○	○	○	N.A

● Standard ○ Optional N.A Not Applicable



POWERPLUS
POWERPLUS GROUP INC., USA



POWERPLUS[®]
POWERPLUS GROUP INC., USA



WHEEL EXCAVATOR



WHEEL EXCAVATOR TECHNICAL SPECIFICATIONS

MODEL		PP130W-IX	PP150W-IX	PP180W-IX	PP210W-X	PP220W-X
Operating Weight	kg	12500	13500	16300	20000	21500
Rated Bucket Capacity	m ³	0.45	0.6	0.65	0.9	1.0
Overall Dimension (L x W x H)	mm	7350 x 2500 x 3000	7510 x 2500 x 3080	8015 x 2700 x 3120	9550 x 2760 x 3450	9555 x 2760 x 3585
Maximum Bucket Digging Force	kN	80	85	85	90	90
Wheelbase	mm	2600	2630	2660	2960	2960
Wheel Tread	mm	1965	1900	1900	1966	1966
Slew Speed	rpm	11	11	11	12.5	12.5
Maximum Gradeability	%	35	35	35	40	40
Travel Speed	km/h	18	25	20	28	28
ENGINE						
Model		CUMMINS 4BTAA3.9-C125	CUMMINS 4BTAA3.9-C125	CUMMINS 4BTAA3.9-C125	CUMMINS 6B5.9 <small>(Made in USA)</small>	CUMMINS 6B5.9 <small>(Made in USA)</small>
Rated Power	HP	125	125	125	175	175
Rated Speed	rpm	2200	2200	2200	2200	2200
Emission	Euro II					
WORKING RANGE						
Maximum Digging Reach	mm	7577	7590	8400	9445	9615
Maximum Digging Depth	mm	4508	4460	5040	5735	5915
Maximum Dumping Height	mm	5405	5470	6600	6775	6900
Maximum Digging Height	mm	7361	7520	9050	9585	9665
Rear Swing Radius	mm	2340	2340	2250	2835	2835
HYDRAULIC SYSTEM						
Main Pump		Kawasaki (Japan)			Kawasaki (Made in Japan)	
Swing Pump		Sunjin (Korea)			Toshiba (Made in Japan)	
Max. Flow	L/min	126 x 2	126 x 2	126 x 2	200 x 2	214 x 2
Working Pressure	MPa	34.3	34.3	34.3	30	32
TANK CAPACITY						
Fuel Tank Capacity	L	160	160	200	280	280
Hydraulic Tank Capacity	L	185	185	95	200	200
CABIN						
Type	An ergonomically designed sound proof cabin, enabling wide operational view, comes standard with designer upholstery, adjustable POWERPLUS air suspension driver's seat, streamline dashboard, air con and radio/mp3 player for extensive operations with well deserved comfort.					
TIRE						
Size	8.25-20-14PR			12.5-20-18PR	12.5-20-18PR	
OPTIONAL ATTACHMENT						
Hydraulic Piping	•	•	•	○	○	
Quick Coupler	○	○	○	○	○	
Hydraulic Breaker	○	○	○	○	○	

• Standard ○ Optional N.A Not Applicable



POWERPLUS
POWERPLUS GROUP INC., USA



AMPHIBIOUS EXCAVATOR



AMPHIBIOUS EXCAVATOR

TECHNICAL SPECIFICATIONS

MODEL		PP300A-IX	PP600A-IX	PP900A-IX	PP1200A-IX
Operating Weight	kg	15000	20000	33000	40000
Bucket Capacity	m ³	0.25	0.4	0.5	0.5
Overall Length	mm	9009	11240	10747	16949
Overall Width	mm	3500	4231 / 5051	4719/5519	5500
Overall Height	mm	3294	5700	3796	4144
Boom Length	mm	4500	6100	7200	7600
Arm Length	mm	3000	3900	4515	10500
Minimum Ground Clearance	mm	717	1167	1103	1228
Rear Slew Radius	mm	2130	2319	2800	3140
Swing Speed	rpm	12.0	13.6	11.0	11.0
Gradeability	°	35	35	35	35
Tractive Effort	kN	112.2	157.5	382.4	4x116
Maximum Digging Force of Bucket	kN	49.0	72.5	122.9	135.0
Maximum Digging Force of Arm	kN	43.4	51	97.6	123.8
ENGINE					
Model		YANMAR 4TNV98T <small>(Made in Japan)</small>	ISUZU 4BG1 <small>(Made in Japan)</small>	ISUZU 6BG1 <small>(Made in Japan)</small>	CUMMINS QSB6.7 <small>(Made in USA)</small>
Rated Power	HP	77	121	155	223
Rated Speed	rpm	2200	2200	1600	2200
Emission		Euro II			Euro III
HYDRAULIC SYSTEM					
Pump		Toshiba (Japan)	Doosan (Korea)	Kawasaki (Japan)	Kawasaki (Japan)
Valve		Toshiba (Japan)	Parker (USA)	Parker (USA)	Toshiba (Japan)
Swing Motor		Toshiba (Japan)	Doosan (Korea)	Eaton (USA)	Sunjin (Korea)
Travel Motor		Doosan (Korea)	Doosan (Korea)	Doosan (Korea)	Doosan (Korea)
WORKING RANGE					
Maximum Digging Reach	mm	8996	10778	12500	18723
Maximum Digging Reach on ground	mm	8772	10510	12210	18507
Maximum Digging Depth	mm	5879	7033	7437	12855
Maximum Vertical Digging Depth	mm	4796	5610	6902	11377
Maximum Digging Height	mm	8443	11860	13055	17375
Maximum Dumping Height	mm	6457	9057	10810	14289
Minimum Front Slew Radius	mm	3524	2870	3186	5150
TANK CAPACITY					
Fuel Tank Capacity	L	300	300	376	560
Hydraulic Tank Capacity	L	210	210	219	250
PONTOON					
Length of Pontoon	mm	6640	9258	9650	11400
Width of Pontoon	mm	1298	1466	1620	1800
Height of Pontoon	mm	1420	1797	2050	1913
Track Gauge	mm	2050 / 3100	2598 / 3398	2925 / 3725	3523
Travel Speed (low/high)	km/h	3.79/2.33	3/2.1	3.29/2.17	2.1/1.2
Ground Pressure	kg/cm ²	0.13	0.14	0.14	0.14
CABIN					
Type	An ergonomically designed sound proof cabin, enabling wide operational view, comes standard with designer upholstery, adjustable POWERPLUS air suspension driver's seat, streamline dashboard, air con and radio/mp3 player for extensive operations with well deserved comfort.				
OPTIONAL ATTACHMENT					
Long Arm		•	•	○	•
Spuds		○	○	○	○
Side Pontoon		○	○	○	○
Extendable Pontoon		•	○	○	N.A
Euro III Engine		○	○	○	N.A

• Standard ○ Optional N.A Not Applicable



POWERPLUS
POWERPLUS GROUP INC., USA

As our products are upgraded periodically, we reserve all rights to change any information without prior notice.



POWERPLUS
POWERPLUS GROUP INC., USA



BACKHOE LOADER



BACKHOE LOADER

TECHNICAL SPECIFICATIONS

MODEL		PBL300S	PBL380S	PBL400S	PBL480S	
Rated Load	kg	1700	1700	1700	1700	
Operating Weight	kg	7600	7600	8000	8000	
Overall Dimension (LxWxH)	mm	7085 x 2313 x 3424	7085 x 2313 x 3424	5835 x 2313 x 3548	5800 x 2313 x 3548	
Wheelbase	mm	2155.5	2155.5	2155.5	2155.5	
Front Wheel Tread	mm	1880	1880	1880	1880	
Rear Wheel Tread	mm	1700	1700	1700	1700	
Minimum Ground Clearance	mm	355	275	355	275	
Drive Axle		4x2	4x4	4x2	4x4	
ENGINE						
Model		WD DEUTZ WP4G95 CUMMINS 4BTA3.9-C110	WD DEUTZ WP4G95 CUMMINS 4BTA3.9-C110	CUMMINS 4BTA3.9-C110 / Cummins B4.5 (Made in USA)	CUMMINS 4BTA3.9-C110 / Cummins B4.5 (Made in USA)	
Rated Power	HP	95 / 110	95 / 110	110 / 100	110 / 100	
Rated Speed	rpm	2200	2200	2200	2200	
Emission		Euro II				
LOADER						
Bucket Capacity	m ³	1.0	1.0	1.0	1.0	
Maximum Dump Clearance	mm	2714	2714	2714	2714	
Maximum Dump Reach	mm	845	845	845	845	
Dump Angle (any position)	°	≥ 43.5	≥ 43.5	≥ 43.5	≥ 43.5	
Lifting Time of Loading Bucket	sec	≤ 4.5	≤ 4.5	≤ 4.5	≤ 4.5	
Lowering Time of Loading Bucket	sec	≤ 3.5	≤ 3.5	≤ 3.5	≤ 3.5	
Dumping Time	sec	≤ 1.5	≤ 1.5	≤ 1.5	≤ 1.5	
BACKHOE						
Bucket Capacity	m ³	0.3	0.3	0.2	0.2	
Maximum Dumping Height	mm	3737	3737	3510	3510	
Maximum Digging Depth	mm	4405	4405	4405	4405	
Maximum Digging Radius	mm	5481	5481	5390	5390	
TRAVEL						
FORWARD	Gear 1	km/h	6.0	6.0	6.0	6.0
	Gear 2	km/h	9.6	9.6	9.6	9.6
	Gear 3	km/h	20.5	20.5	20.5	20.5
	Gear 4	km/h	38.0	38.0	38.0	38.0
REVERSE	Gear 1	km/h	6.0	6.0	6.0	6.0
	Gear 2	km/h	9.6	9.6	9.6	9.6
	Gear 3	km/h	20.5	20.5	20.5	20.5
	Gear 4	km/h	38.0	38.0	38.0	38.0
TRANSMISSION SYSTEM						
Brand	CARRARO (Italy)					
Torque Converter Cooling Type	Pressure Oil Circulating					
Transmission Case Type	Synchronesh mechanical shift					
STERING SYSTEM						
Type	Front wheel steering					
System pressure	kgf/cm ²	140	140	140	140	
AXLE						
Brand	CARRARO (Italy)					
Type	Wet-type with Multi-Disc Brake					
Type of Main Reducer	Spiral Bevel Gear, Single Stage					
Type of Final Reducer	Single Stage Planetary					
TIRE						
Front Tire		11L-16F3-12PR	12-16.5NHS-10PR	11L-16F3-12PR	12-16.5NHS-10PR	
Rear Tire		19.5L-24R4-12PR	19.5L-24R4-12PR	19.5L-24R4-12PR	19.5L-24R4-12PR	

• Standard ◦ Optional N.A Not Applicable



POWERPLUS[®]

POWERPLUS GROUP INC., USA



POWERPLUS
POWERPLUS GROUP INC., USA



SKID STEER LOADER



SKID STEER LOADER

TECHNICAL SPECIFICATIONS

MODEL		PSL750S-III	PSL850S-III	PSL1000S-III	PSL1650S-III	PSL1000T-III
Type		Wheel				Track
Operating Load	kg	750	850	1000	1650	1000
Bucket Capacity	m ³	0.50	0.55	0.60	0.60	0.60
Overall Dimension (LxWxH)	mm	3420 x 1740 x 2140	3490 x 1880 x 2160	3490 x 1880 x 2160	3666 x 1980 x 2080	3500 x 1830 x 2150
Maximum Travel Speed	km/h	12	12	12	20.5	12
Bucket Width	mm	1740	1880	1880	1980	1830
Wheelbase	mm	991	991	1085	1218	1500
Ground Clearance	mm	185	205	205	218	200
Tread Width	mm	1450	1500	1500	1530	1462
Dumping Reach	mm	750	750	750	850	715
Rollback of Bucket at Full Height	°	104	104	102	96	104
Rollback of Bucket on Ground	°	30	30	30	27	30
Maximum Dump Angle	°	40	40	40	42	40
Angle of Departure	°	20	20	20	26	20
Fuel Capacity	L	65	60	80	82	80
ENGINE						
Model		YANMAR 4TNE92 / MITSUBISHI S4S <small>(Made in Japan)</small>	YANMAR 4TNE92 / MITSUBISHI S4S <small>(Made in Japan)</small>	MITSUBISHI S4S-454 <small>(Made in Japan)</small>	PERKINS 1104D-44T <small>(Made in UK)</small>	MITSUBISHI S4S-454 <small>(Made in Japan)</small>
Rated Power	HP	45 / 63	45 / 63	75	100	75
Rated Speed	rpm	2450 / 2650	2450 / 2650	2600	2200	2600
Emission		Euro III				
HYDRAULIC SYSTEM						
Main Pump		Sauer (USA)	Bondioli Pavesi (Italy)	Rexroth (Germany)	Rexroth (Germany)	Rexroth (Germany)
Main Motor		Eaton (USA)	Eaton (USA)	Eaton (USA)	Rexroth (Germany)	FUJI (Japan)
OPERATION						
Weight of Machine with Bucket	kg	3100	3250	3600	4260	3800
Front Turning Radius	mm	1958	1958	2150	2200	2010
Rear Turning Radius	mm	1630	1728	1780	1710	1714
Bucket Lifting Force	kN	16	16	24	25	24
Arm Lifting Force	kN	24	24	28	29	28
Total Cycling Time	sec	9	9	12	11	10
Rated Flux	L/min	75	75	75	88	75
TIRE						
Tire		10-16.5-10PR	12-16.5-12PR	12-16.5-12PR	12-16.5-12PR	329X86BX52
OPTIONAL ATTACHMENT						
High Flow		N.A	N.A	o	o	o
Pilot Control		•	•	•	•	•
Solid Tires		o	o	o	o	o
Enclosed Cabin		o	o	o	o	o
Aircon		o	o	o	o	o
Heater		o	o	o	o	o
Auger		o	o	o	o	o
Backhoe Arm		o	o	o	o	o
Dozer Blade		o	o	o	o	o
Grass Grapple		o	o	o	o	o
Hammer		o	o	o	o	o
4 in 1 Bucket		o	o	o	o	o
Snow Blade		o	o	o	o	o
Sweeper		o	o	o	o	o
Trencher		o	o	o	o	o
Pallet fork		o	o	o	o	o

• Standard o Optional N.A Not Applicable



POWERPLUS
POWERPLUS GROUP INC., USA



POWERPLUS
POWERPLUS GROUP INC., USA



PIPELAYER



PIPELAYER

TECHNICAL SPECIFICATIONS

MODEL		PPL250	PPL450	PPL750	PPL950					
Maximum Lifting Capacity	T	20	40	70	90					
Model of Chassis		D65EX-15	D85EX-15	D155B-II	D155B-II					
Overall Dimension (LxWxH)	mm	4135x 3620 x 6735	4750 x 4448 x 8297	5630 x 4820 x 9489	5630 x 4886 x 10479					
Operating Weight	kg	23000	33000	49000	55000					
ENGINE										
Model		CAT 3308B(L)	CUMMINS NT855-C280	CUMMINS NTA855-C360	CUMMINS NTA855-C360					
Rated Power	HP	165	230	325	350					
Rated Speed	rpm	1850	2000	2000	2000					
Emission		Euro II								
TRANSMISSION										
Type		3 Element, Single Stage, Single phase.	3 Element, Single Stage, Single phase.	3 Element, Single Stage, Single phase.	3 Element, Single Stage, Single phase.					
Transmission		Planetary gear, multiple-disc clutch, hydraulic-actuated	Planetary gear, multiple-disc clutch, hydraulic-actuated,	Planetary gear, multiple-disc clutch, hydraulic-actuated, forced lubrication.	Planetary gear, multiple-disc clutch, hydraulic-actuated, forced lubrication.					
Steering Clutch		Wet type, multi-disc, spring loaded, hydraulic-released.	Wet, multiple-disc, spring loaded, hydraulically released.	Wet, multiple-disc clutch, spring loaded, hydraulic actuated.	Wet, multiple-disc clutch, spring loaded, hydraulic actuated.					
Steering brake		Wet type, band brake, operated with hydraulic booster.	Wet, band brake, operated with hydraulic booster and valve inner linkage.	Wet, band brake, operated with hydraulic booster hydraulic interlocking.	Wet, band brake, operated with hydraulic booster hydraulic interlocking.					
Final Drive		Spur gear, double reduction, splash lubricated.	Spur gear, double reduction, splash lubricated.	Spur gear reduction, double reduction, splash lubricated.	Spur gear reduction, double reduction, splash lubricated.					
HYDRAULIC SYSTEM										
Type		Gear type, high pressure fixed displacement								
Maximum Pressure	MPa	21	21	21	21					
Discharge	L/min	80	80	80	98					
PIPELAYING EQUIPMENT										
Type		Planetary Hydraulic Winches								
Winch Brakes		Multiple-disc, Hydraulic Released								
		Hook	Boom	Hook	Boom	Hook	Boom	Hook	Boom	
Drum Diameter	mm	380	300	380	360	470	470	470	470	
Flange Diameter	mm	540	435	600	510	640	640	640	640	
Drum Length	mm	346	226	372	320	510	510	510	510	
Capacity	m	60 (16mm)	40 (16mm)	100 (18mm)	100 (18mm)	95	75	85	85	
Wire Rope	m	55	40	90	90	85	75	85	75	
Min Breaking Strength	kN	200 (16mm)		200(18mm)		322		322		
Hook Speed	m/min	12		6.2		7.3		7		
Luffing Time	sec	25 (0-85)		20 (0-86)		32 (0-86)		40 (0-86)		
Boom - Square Section Standard	m	6		7.5		8.6		9.6		
Removable Counterweight		6 segments		2 segments		2 segments		4 segments		
UNDERCARRIAGE										
Width of Track Shoes	mm	560		660		760		860		
Track Gauge	mm	2050		2250		2380		2490		
Carrier Rollers (each side)		2		2		2		2		
Track Rollers (each side)		7		7		9		9		
Pitch	mm	203.2		216		228		228		
No of Shoes		39		41		45		45		
CABIN										
Type		An ergonomically designed sound proof cabin, enabling wide operational view, comes standard with designer upholstery, adjustable POWERPLUS air suspension driver's seat, streamline dashboard, air con and radio/mp3 player for extensive operations with well deserved comfort.								
OPTIONAL ATTACHMENT										
ROPS / FOPS Cabin		o		o		o		o		
Cold Weather Kit		o		o		o		o		
Winch		o		o		o		o		
Extended Boom		o		o		o		o		

• Standard o Optional N.A Not Applicable



POWERPLUS
POWERPLUS GROUP INC., USA



PIPELAYER



PIPELAYER

TECHNICAL SPECIFICATIONS

MODEL		PPL450EX	PPL650EX
Maximum Lifting Capacity	T	40	60
Overall Dimension (LxWxH)	mm	11360 x 3225 x 3512	12700 x 3425 x 3650
Operating Weight	kg	33000	45000
ENGINE			
Model		CUMMINS C8.3-C <small>(Made in USA)</small>	CUMMINS M11-C315 <small>(Made in USA)</small>
Rated Power	HP	280	320
Rated Speed	rpm	2000	2000
Emission		Euro II	
HYDRAULIC SYSTEM			
Main Pump		Rexroth (Germany)	
Swing Pump		Rexroth (Germany)	
Max. Pump Output	L/min	260	360
PIPELAYING EQUIPMENT			
HOOK OPERATION			
Operation Type		Joystick (R)	
Winch Brakes		Multiple disk, hydraulic released	
Drum Diameter	mm	420	420
Flange Diameter	mm	620	620
Drum length	mm	368.5	368.5
Capacity (20mm)	m	80	80
Hook Speed	m/min	12	12
BOOM OPERATION			
Operation Type		Joystick (R)	
Luffing type		Cylinder	
Luffing time	sec	16	26
Boom Type		A Frame square section	
Boom Length	m	7.0	7.8
Maximum Lifting Height	m	6.8	7.6
Max. Lifting Torque	kn.m	479	694
Extendable Counterweight	kg	3800	4500
PIPE CLAMPING EQUIPMENT			
Operation Type		Joystick (L)	
Open & Close		Cylinder Transmission	
Clamp Size	inch	20-32	32-56
UNDERCARRIAGE			
Track Length	mm	3780	4235
Ground Pressure	kPa	68	85.4
Track Roller		8	8
Carrier Rollers		2	2
TRAVEL			
Type		Dual Lever	Dual Lever
Travel Speed (high/low)	km/h	5.1/2.9	6.3/2.9
CABIN			
Type	An ergonomically designed sound proof cabin, enabling wide operational view, comes standard with designer upholstery, adjustable POWERPLUS air suspension driver's seat, streamline dashboard, air con and radio/mp3 player for extensive operations with well deserved comfort.		
OPTIONAL ATTACHMENT			
ROPS / FOPS Cabin		○	○
Cold Weather Kit		○	○
Extended Boom		○	○

●Standard ○Optional N.A Not Applicable



POWERPLUS[®]

POWERPLUS GROUP INC., USA



Tel: +971 58 287 1115 / +97158 525 1492 Dubai-UAE

Tel: +237 679 98 54 35 / +237 691 77 21 69 (CMR)

Email: info@abundancemena.com

www.abundancemena.com